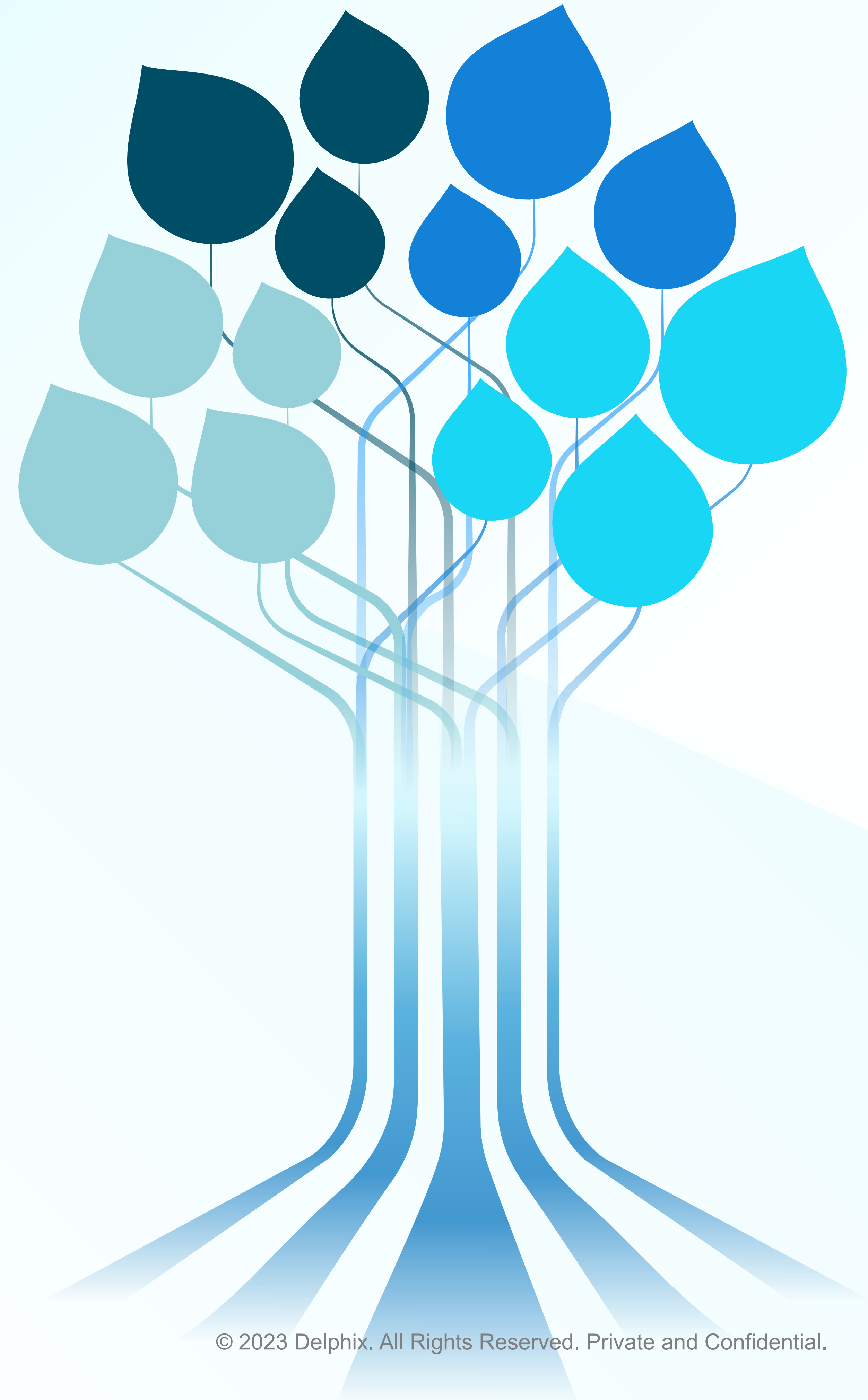


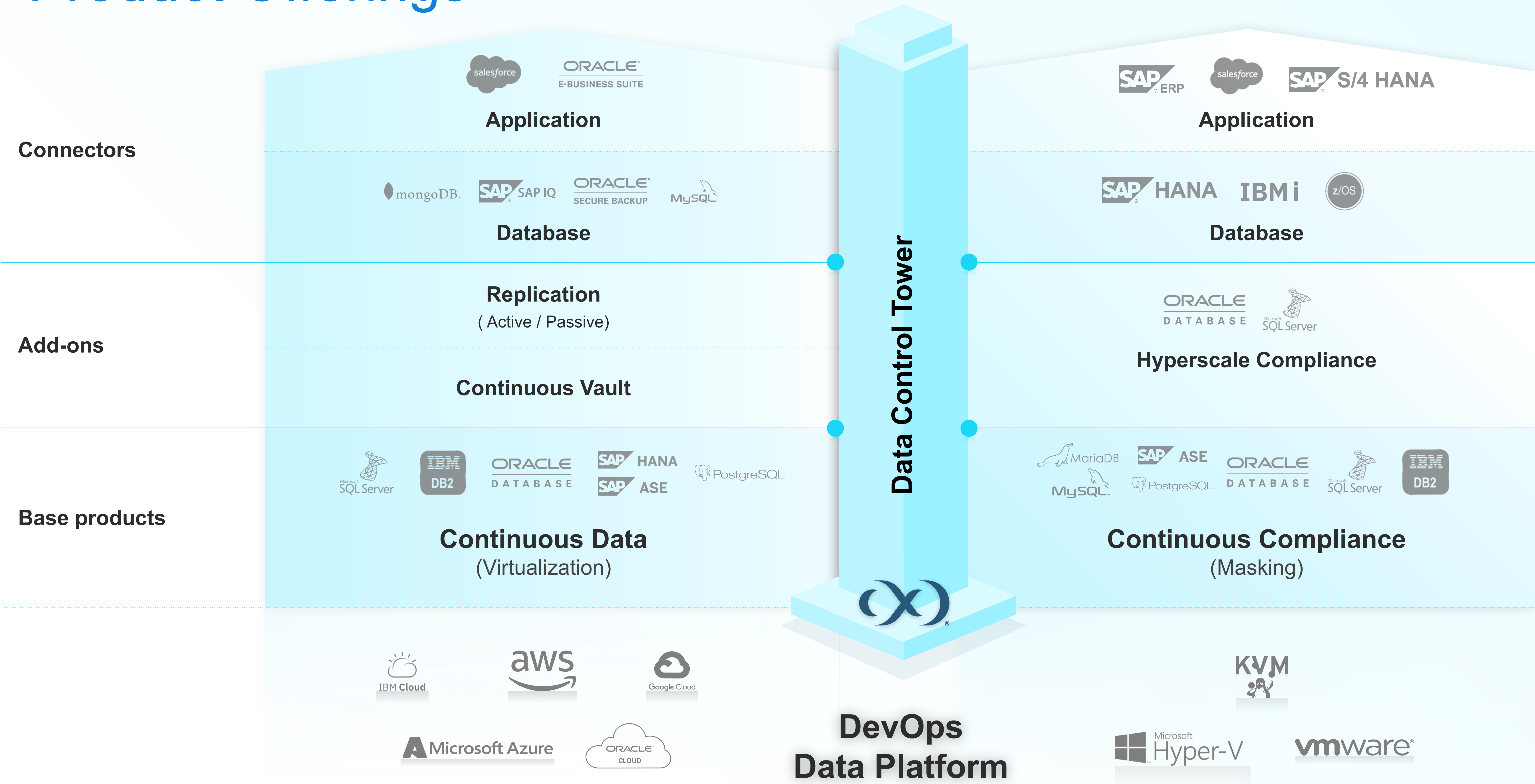


What's New

Delphix December 2023 Product Updates



Product Offerings



Data Control Tower

Single Point of Control for Multicloud Data Governance, Compliance, and Automation at Scale

Data Governance

Data library with catalog, tagging, and attribute-based access controls

Data Compliance

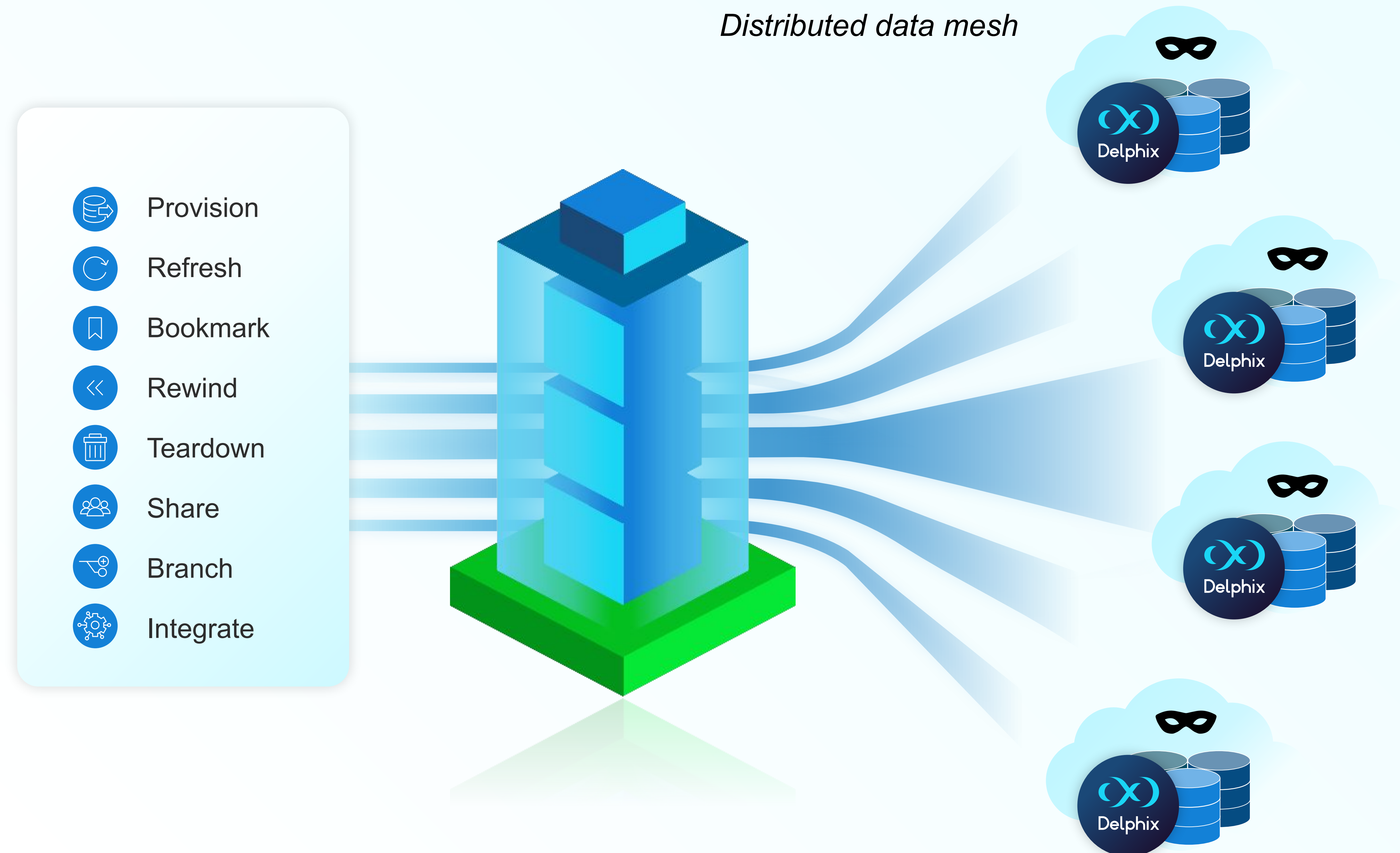
Global sensitive data visibility and central masking orchestration

Data Automation

Self-service developer experience with pre-built DevOps integrations to automate test data within CI/CD pipelines

 Terraform  servicenow  Jenkins  Jira

 GitHub  urban{code}  GitLab



December Feature Highlights

- **Continuous Data** now has decreased VDB downtime during full upgrades.
- **Hyperscale Compliance** now supports masking Parquet files.
- **Continuous Compliance** has expanded classifiers to discover data and algorithms to mask them.

October '23 Updates

Data Control Tower (DCT)

- Hyperscale Compliance User Interface: DCT now provides an interactive UI that enables creating and editing Hyperscale instances and the ability to update/execute Hyperscale jobs.
- Engine Replication Management: DCT has added the capability of mapping replication parent/child relationships within its data library, including failover scenarios where replicas become the primary. This enables accurate monitoring and administration of replication workstreams.
- Operations Monitoring Action Bar: Continuously view all running operations relevant to a user group while performing other DCT UI activities using the new action bar.

Continuous Compliance

- New Multi-Column Conditional Algorithm Framework: We have added a new algorithm framework that enables conditional masking of a column. For example, you can use this framework to apply different secure lookups to a name column based on a language code. This will eliminate the need for scripting or custom frameworks that were previously required.
- Additional Classifiers and Algorithms: We added additional classifiers, domains, and algorithms to allow you to find and mask age and location data easily.
- Updated User Experience: We continue overhauling the user interface to provide better utility, scalability, and stability. We've updated the inventory page for XML and mainframe file formats in this release.
- FTPS Support for Mainframe Masking: FTPS authorization is now available for masking files on mainframes.
- Improved support for Db2 iSeries: The Db2 iSeries database connector now supports automated management of indexes, constraints, and triggers impacted by masked columns. This eliminates custom pre- and post-scripting.
- Improved support for Db2 z/OS: The Db2 z/OS database connector now supports automated management of constraints and triggers impacted by masked columns. This eliminates custom pre- and post-scripting. Note that due to the subtleties of the Db2 z/OS implementation, there is no support for automated management of indexes.
- Password Vault for SAP ASE: Supported password vaults may now be used with SAP ASE (Sybase) databases.
- Improved support for SQL Server: The SQL Server connector now supports leveraging Azure AD Service Principals.
- Redeploy Support (Repave): Continuous Compliance engines may now be disconnected from their storage and redeployed, maintaining the previous configuration and data. Note that redeployment support only works with the same Delphix Engine version.

Hyperscale Compliance

- Embedded XML/JSON: Applications increasingly store state as semi-structured data. To better cover these cases, masking XML and JSON content embedded in delimited files is now supported.
- Hyperscale UI in DCT: Hyperscale Compliance users can now leverage the Hyperscale User Interface in DCT to manage hyperscale orchestrators, manage and execute hyperscale jobs, and monitor job progress.

Continuous Data

- Redeploy Support (Repave): Continuous Data engines may now be disconnected from their storage and redeployed, maintaining the previous configuration and data. Redeployment support only works with the same Delphix Engine version. Currently, engine redeployment is not supported with Elastic Data engines.

Data Control Tower (DCT)

- Delphix Kubernetes Driver: Virtual databases can be provisioned into containers through Helm charts and kubectl commands using a new, pre-built DCT integration. Teardown of these containers can also be automated, enabling ephemeral infrastructure for Kubernetes-based applications.
- Engine Performance Reports: New Continuous Data and Compliance reports have been added to improve the central management of engine infrastructure performance. You can now view allocated resources and track performance for all connected engines, including disk latency, network latency, and throughput.
- Hyperscale Compliance Jobs: DCT now has support for creating, managing, and executing Hyperscale Compliance jobs. The concept of Engine Pools has been introduced along with several other enhancements to refine the overall experience.
- User Experience Improvements: Several enhancements including customizing the columns across all tables, increased color contrast for better accessibility, simplified navigation across tabs, and a variety of visual style improvements.
- Replication Tag Inheritance: DCT now offers API-based simplified tag management for parent/child replication deployments, optionally syncing source tags to a target replica.
- Oracle and SQL Server Source Linking: Linking sources for Oracle and SQL Server is now supported in the User Experience, along with creating bookmarks.
- Terraform Provider: A new Terraform resource facilitates creating and deleting Oracle dSources. This expands on the existing data source support with the provider.

Continuous Compliance

- Password Vault Support for MariaDB/MySQL: Supported password vault platforms may now be used to authenticate the connections to MariaDB and MySQL databases.
- Extended Email Algorithm: A new email algorithm has been introduced that allows for chaining existing algorithms to produce a combination of name and domain. For example, this will allow the chaining of existing first name, last name, and domain algorithms. This differs from the “Email Unique” algorithm in that the “Email Unique” algorithm aims to generate a unique email address with a string of characters rather than a standard human-readable name.
- Masking User Experience Improvements: The masking user experience overhaul continues with an update to the environment's ruleset page.
- New Classifiers: In Automated Sensitive Data Discovery, classifiers identify different data types. We've added new classifiers for gender, sexual orientation, house number, marital status, language, ethnicity, blood type, prescription drugs, companies, job titles, and departments.
- New Secure Lookup Algorithms: To pair with the new classifiers, we've added new Secure Lookup Algorithms for marital status, language, ethnicity, blood type, prescription drugs, job titles, and department.
- SAP HANA: The JDBC Driver version 2.18.13 for SAP HANA SP07 is now supported.

Continuous Data

- NFS Encryption: Using encryption over NFS between Continuous Data engines and the target and staging hosts is now supported. Please consult with your account team as to whether this is an appropriate fit for your needs.
- MySQL on Linux: Manual Ingestion has been renamed to Staging Push to standardize on Dephix's established ingestion architectures. Strengthened the refresh and snapshot workflow to minimize occasional failures. Please review the upgrade path for installation guidance.
- Oracle E-Business Suite (EBS): Updated our virtual database provisioning hooks to support the Solaris operating system. We recommend this release to all users as it contains various bugs and security fixes.
- Couchbase: We have added support to define multiple buckets, configure RAM sizes, and the ability to ingest multiple full backups. Additionally, the connector will now report data source sizing.
- Microsoft SQL Server Backup: We have enhanced the usability of data ingestion from Microsoft SQL Server on Azure by dynamically modifying the Access Control Lists (ACLs) for files and folders that different staging and target environment users own.
- Documentation Updates: We have made broad improvements across multiple areas of our documentation, including the Delphix Glossary, General Topics, and PostgreSQL.

November '23 Updates

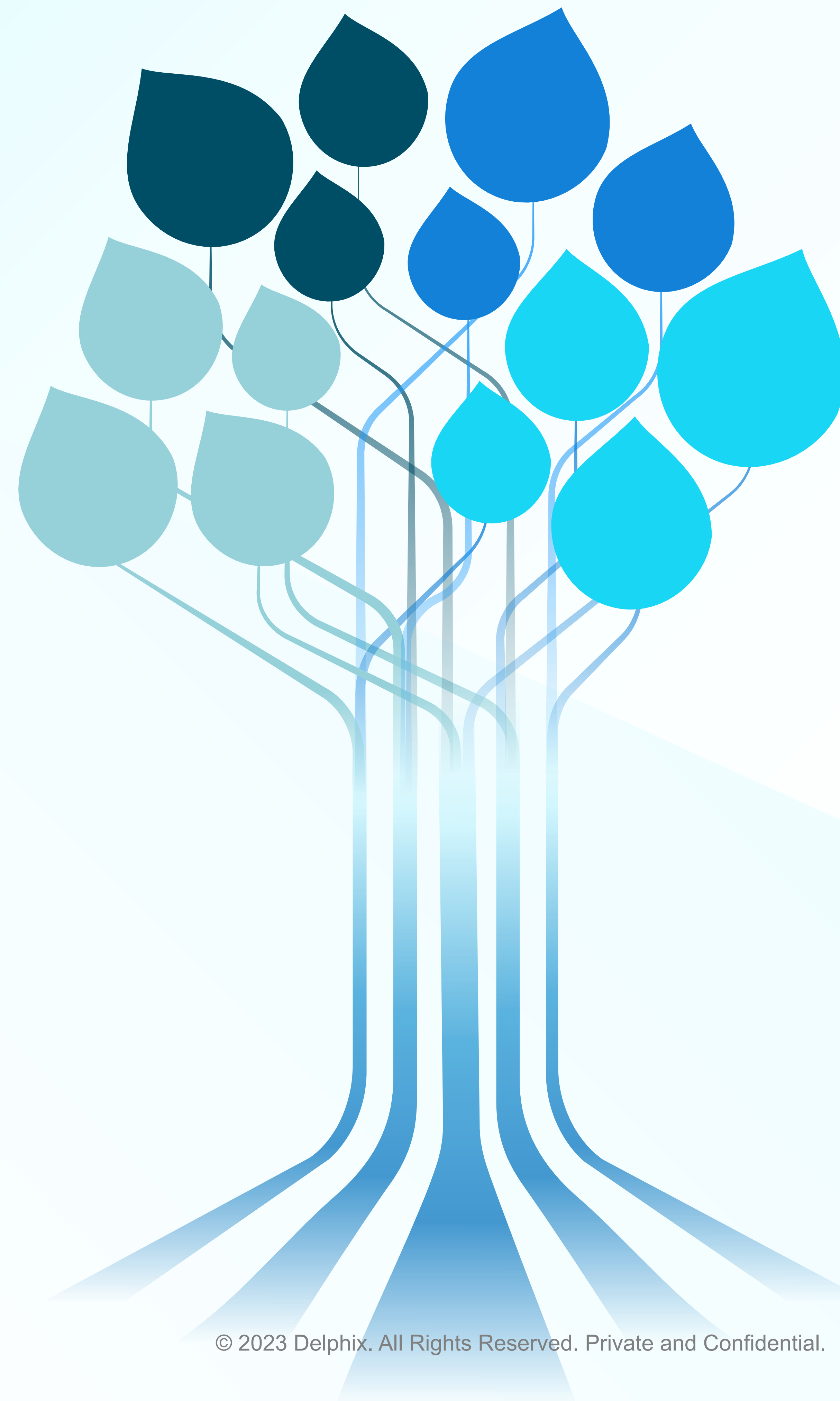
Compliance Services for Salesforce

- Resume Masking jobs: DCS for Salesforce jobs can now be resumed in case of errors. Resuming only masks previously unmasked records and skips all masked ones.
- Expanded Masking Job User Experience: A new job details page includes masking progress information, masking record counts, a resume feature, metadata summary, and others.

Compliance Services for Azure

- Data Flow Parameterization: In collaboration with Microsoft, it is now easier to rapidly deploy masking across thousands of tables in a single Azure Data Factory (ADF) pipeline, letting users manage relevant metadata as parameters. We're releasing templates to expedite the deployment process for common data sources, starting with Snowflake.

December 2023 Updates




Data Control Tower (DCT)

- **Kubernetes (K8s) Driver:** To expand our Kubernetes Driver's capability, we now support AWS Elastic Kubernetes Service (EKS), introduced DCT API Usage monitoring, and fixed various issues to ease adoption.

Continuous Compliance

- **New String Chaining Framework:** A new framework, StringAlgorithmChain, has been added to simplify the process of creating chained algorithms. This works specifically with String-type algorithms and allows for the creation of output based on the combination of those algorithms.
- **Expanded Classifiers:** Automated Sensitive Data Discovery has been expanded to add data discovery for medical codes (CPT, ICD-9, ICD-10), IBAN numbers, swift codes, and bank account routing numbers. Further, we've updated the "payment amount" classifier and added a type classifier for license plates.
- **Expanded Algorithms:** New masking algorithms have been added for swift codes and bank account routing numbers.
- **SAP Accelerator:** Certified SAP HANA SPS 07, removed the `engine` command to simplify configuration, and improved error messaging to ease troubleshooting.

Continuous Compliance

CONTINUOUS COMPLIANCE

EnvironmentsMonitorSettingsAdminAudit

Job Wizardadmin

Home > Monitor

Monitor

0Jobs Queued

0/7Jobs Running

0/2048Memory Usage(MB)

ReloadReset

Displaying 1 to 11 of 46

Environment	Job Name	Status ↑		Submit Time	Start Time	Type	Actions
env_R7MTX01X	mask_AAIG6RJE	CANCELLED		Dec 8, 2023 1:27 PM P...	Dec 8, 2023 1:27 PM P...	MASK	
env_H8GE26X0	mask_G5S6G1NZ	CANCELLED		Dec 8, 2023 1:07 PM P...	Dec 8, 2023 1:07 PM P...	MASK	
env_EDELPB8N	mask_XG3761UE	CANCELLED		Dec 8, 2023 1:04 PM P...	Dec 8, 2023 1:04 PM P...	MASK	
env_G9Q1G5I1	mask_4VXYMJ51	FAILED		Dec 8, 2023 1:01 PM P...	Dec 8, 2023 1:01 PM P...	MASK	
env_H8GE26X0	prof_KXR6AKGN	SUCCEEDED		Dec 8, 2023 1:06 PM P...	Dec 8, 2023 1:06 PM P...	PROFILE	
env_DXPHEQ3J	prof_PQY1BUVK	SUCCEEDED		Dec 8, 2023 12:33 PM ...	Dec 8, 2023 12:33 PM ...	PROFILE	
env_UEYKNZIK	prof_7ENHV8NP	SUCCEEDED		Dec 8, 2023 2:06 PM P...	Dec 8, 2023 2:06 PM P...	PROFILE	
env_Z8ML1QPX	prof_3NVQ7R1E	SUCCEEDED	5 of 5 - Profiling Complet	Dec 8, 2023 12:47 PM ...	Dec 8, 2023 12:47 PM ...	PROFILE	
env_XP2JJZS7	prof_8PNS983O	SUCCEEDED	5 of 5 - Profiling Complet	Dec 8, 2023 1:23 PM P...	Dec 8, 2023 1:23 PM P...	PROFILE	
env_DXPHEQ3J	mask_16VWYWBA	SUCCEEDED	10 of 10 - Job Completed	Dec 8, 2023 12:35 PM ...	Dec 8, 2023 12:35 PM ...	MASK	

Environments | Monitor | Settings | Admin | Audit

Support

UI Improvements: We have continued improving the user interface, replacing the monitoring function in this release.

Continuous Data

- **Decreased VDB Downtime:** There are two types of upgrades for Continuous Data: full upgrades, where VDB downtime is incurred during a system reboot, and deferred updates, where there is no system reboot and, therefore, no downtime.
- **Object Storage Modification:** Key rotation, endpoint URL, regions, and authentication types may now be modified for existing connected object storage through the API and CLI.
- **NFS Encryption:** We have extended support for Repave and Oracle RAC configurations with NFS encryption.
- **IBM Db2 HealthChecker:** The HealthChecker can now validate staging and target environment configuration to simplify implementation. This joins existing support for Oracle E-Business Suite (EBS).
- **PostgreSQL:** Provided WAL Logs will no longer automatically roll forward a dSource. This action will only occur when a dSource snapshot is taken to eliminate unknown changes.
- **SAP HANA:** Certified SAP HANA SPS 06 and 07.

Compliance Services for Salesforce

- **Custom Batch Size:** Salesforce masking jobs now offer a custom batch size as an optional parameter. When unselected, we will automatically calculate the batch size. Custom batch size enables the masking of tables whose updates cause row locks and facilitate granular performance tuning.

Compliance Services for Azure

- **Private Link for ASDD:** Private Link is now supported for ASDD pipelines (in addition to masking pipelines). This lets you ensure that data sent to DCS for profiling only moves within your virtual private network and never traverses the public internet.

Hyperscale Compliance

- **Parquet Support:** Hyperscale compliance now supports masking Parquet files. Note that the Hyperscale Orchestrator must be sized correctly to handle Parquet files.

December Product Version Releases

Product/Connector	Version	Release Date
Hyperscale Compliance	v16	December 19, 2023
Continuous Data	v18	December 20, 2023
Continuous Compliance	v18	December 20, 2023
PostgreSQL	v4.2.0	December 20, 2023
IBM Db2 - HealthChecker	v1.1.0	December 21, 2023
K8s Driver	v1.1.0	December 21, 2023
SAP Accelerator	v2.3.0	December 21, 2023
MySQL	v4.4.0	December 22, 2023

Delphix Product Updates Blog - released monthly

Product Updates

Delphix Platform

June 2023

PLATFORM JUN 29, 2023

Delphix Platform June 2023 Product Updates

The June 2023 updates to the Delphix platform include a new Software-as-a-Service offering for Microsoft Azure, an enhanced search interface and operations dashboard in Data Control Tower, and more.

Read more →

Product Updates

Delphix Platform

May 2023


PLATFORM MAY 30, 2023

Delphix Platform May 2023 Product Updates

The Delphix Platform's top new functionalities include Expanded data discovery, Oracle table space subsetting, and improved Data Control Tower developer experience.

Read more →

Data Privacy and Protection




PLATFORM MAY 11, 2023

5 Takeaways from Data Company Summit Miami 2023

Featuring luminary speakers from companies across many industries, Delphix's Data Company Summit 2023 was a great opportunity for IT leaders to learn how to unleash continuous innovation and compliance.

Read more →




PLATFORM APR 27, 2023

Introducing the Delphix Spoke for ServiceNow

The Delphix Spoke for ServiceNow provides out-of-the-box, automated workflows and actions, as well as a self-service catalog to enable application teams to manage their test data environments.

Read more →




PLATFORM FEB 13, 2023

Delphix and DataStax Automate Cassandra Data for CI/CD Pipelines and Application Migration

Find out how Delphix and DataStax automates Cassandra data provisioning for DevOps and Analytics

Read more →



PLATFORM OCT 11, 2022

Delphix Launches New Compliance Service Integrated with Microsoft Intelligent Data Platform

Using Delphix in conjunction with Microsoft Intelligent Data Platform makes the delivery of on-demand, compliant data easy for all stakeholders

Read more →

[Delphix Platform Product Updates](#)