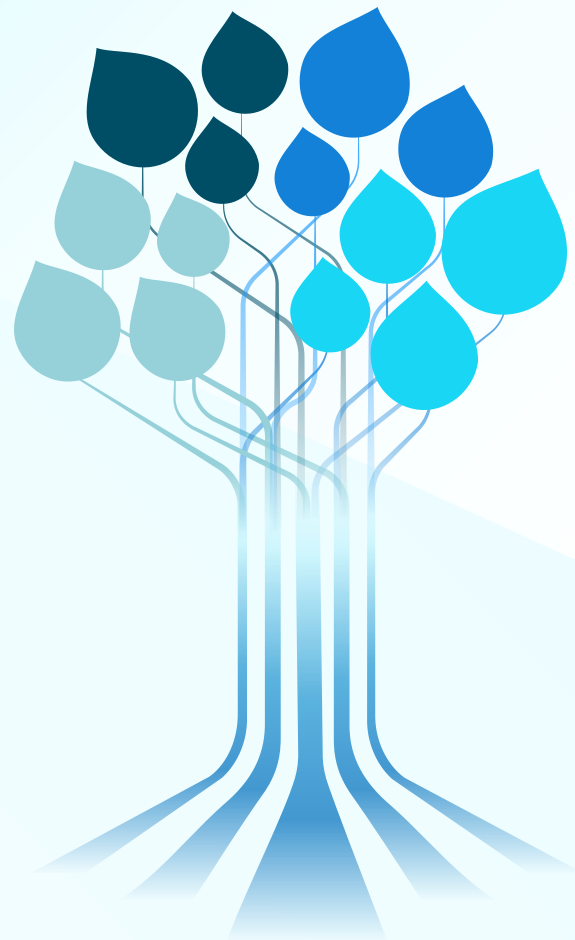


What's New

Mar 2022 in 6.0.13



Delphix Product Naming Updates

- Product names have been updated across the UI and supporting content
- Virtualization is now “Continuous Data”
- Masking is now “Continuous Compliance”
- Expect to see these changes phased in starting with the 6.0.13 release

The image displays two overlapping screenshots of the Delphix login interface. The background screenshot shows the 'Delphix Continuous Compliance' login page with a 'Setup' link, 'Username' and 'Password' input fields, a 'Sign in' button, and a 'Remember Me' checkbox. The foreground screenshot shows the 'DELPHIX CONTINUOUS DATA' login page, featuring the same input fields and a 'Log In' button, with a 'Setup' link positioned to the left of the button.

Delphix Continuous Compliance [Setup](#)

Username

Password

[Sign in](#)

☐ Remember Me

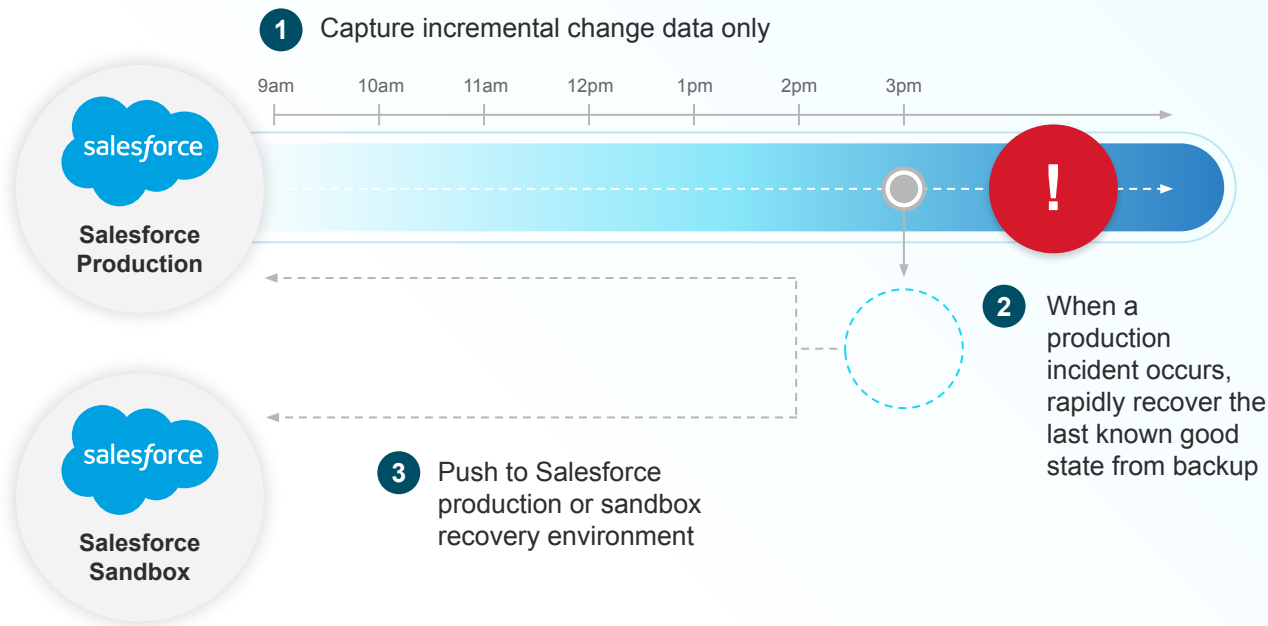
DELPHIX
CONTINUOUS DATA

Username

Password

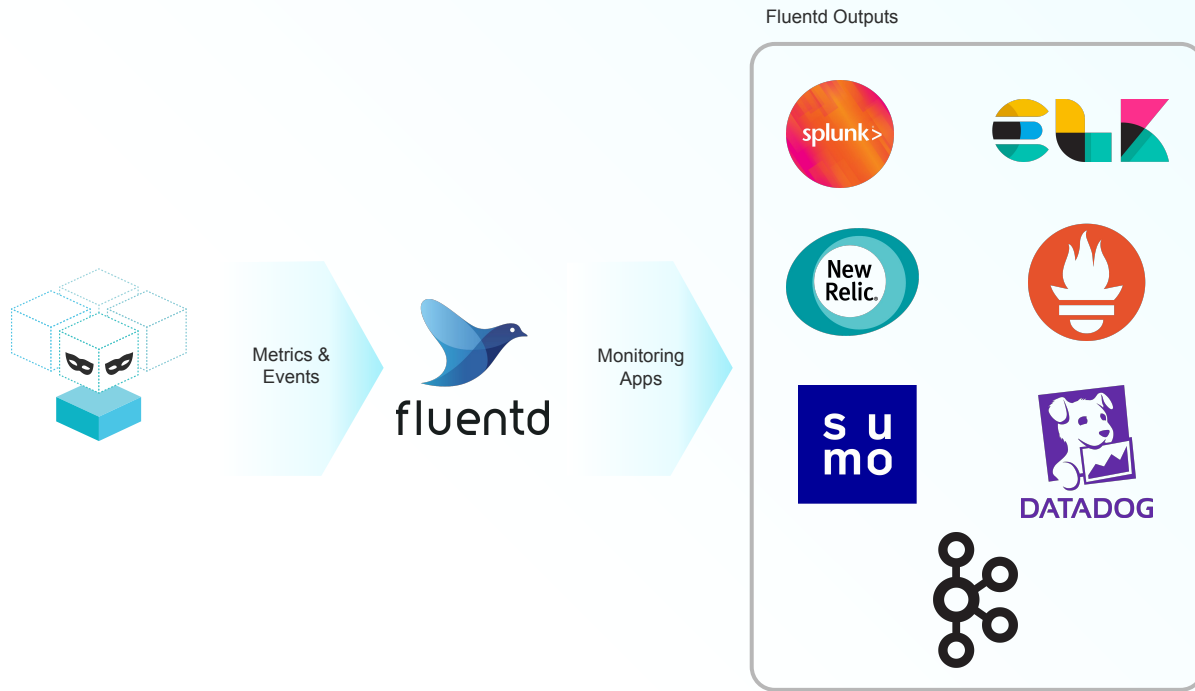
[Setup](#) [Log In](#)

Salesforce Data Protection



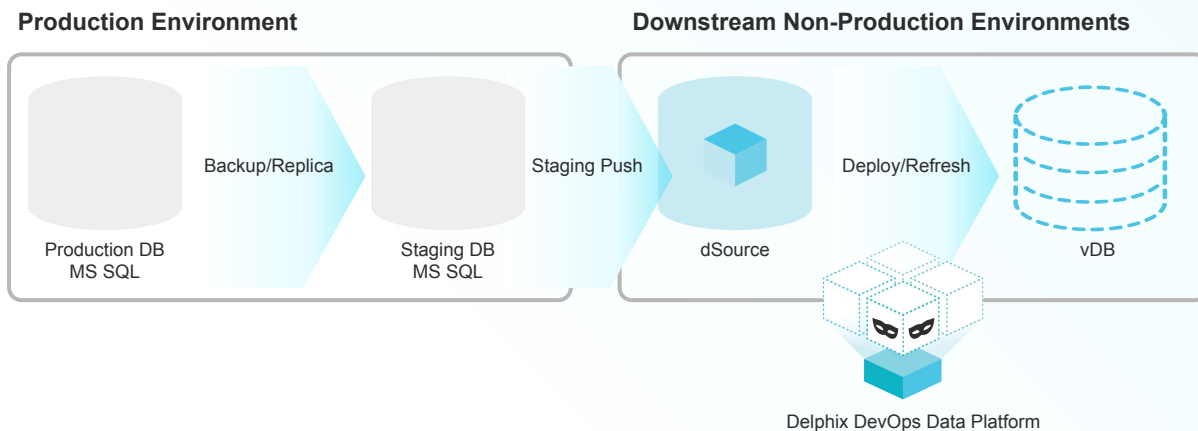
- Integrate with both production and sandbox Salesforce data
- Mask consistently with referential integrity
- Predefined data discovery + masking for default Salesforce schema
- Automated sensitive data discovery
- Full and incremental backups
- Rapid data recovery

FluentD Integration for Monitoring Apps



- Send Metrics and Events to a variety of monitoring solutions
- Expands upon existing Splunk integration for events & metrics
- Enables integration with monitoring solutions such as New Relic, SumoLogic, and DataDog
- Enables integration with open-source solutions like ELK, Prometheus, and Kafka

Microsoft SQL Server Staging Push



- Makes it significantly easier to integrate with the many existing Microsoft SQL-certified backup solutions
- Push new data into the Delphix DevOps Data Platform instead of requesting data during a polling interval
- Isolate ingest to Delphix from production instances

Updated in **6.0.13**

Continuous Compliance Masking UI Updates

DELPHIX CONTINUOUS COMPLIANCE Job Wizard admin

Environments Monitor Settings Admin Audit

Home > Monitor
Monitor

0/7 Jobs Running 0/2048 Memory Usage (MB)

Start Date End Date Any Status PROFILE Search by job name using wildcard * Search Reset

Environment	Job Name	Submit Time	Start Time	Type	Progress	Status	Queue Position
env_4KH95ANZ	prof_0NC2MPJQ	2022-02-07 15:08	2022-02-07 15:08	PROFILE	100%	★ SUCCEEDED	
env_QDTLP49K	prof_15XL5MQK	2022-02-07 15:04	2022-02-07 15:04	PROFILE	100%	★ SUCCEEDED	
env_HV5T90XF	prof_2XTSH9PM	2022-02-07 14:42	2022-02-07 14:42	PROFILE	100%	★ SUCCEEDED	
env_QUPY9IZ0	prof_3KSS8IF1	2022-02-07 15:14	2022-02-07 15:14	PROFILE	100%	★ SUCCEEDED	
env_5FVY6K1	prof_4DS8AASF	2022-02-07 14:44	2022-02-07 14:44	PROFILE	100%	★ SUCCEEDED	
env_BRLHJ14G	prof_5N45MHFY	2022-02-07 14:46	2022-02-07 14:46	PROFILE	100%	★ SUCCEEDED	
env_NJZBDHCP	prof_635MO9SX	2022-02-07 15:24	2022-02-07 15:24	PROFILE	100%	★ SUCCEEDED	
env_BMR3HMH	prof_7Z0KAKMJ	2022-02-07 14:59	2022-02-07 14:59	PROFILE	100%	★ SUCCEEDED	
env_EAX1KEIE	prof_8E4U016B	2022-02-07 15:11	2022-02-07 15:11	PROFILE	100%	★ SUCCEEDED	

DELPHIX Masking Report							
Job Profile				Job Status			
Environment Name:		env_X31E4UP9		Job Status :		SUCCEEDED	
Job Name:		mask_9334UFWR		Total # Tables		1	
Number of Streams:		1		Total # Rows		1000	
				Total # Columns with Non-Conformant Data:		0	
				Total Time Taken (HH:mm:ss):		00:04:00	
Table Name	Status	Progress	Time	Rows/min	# Rows Masked	# Rows Remaining	# Columns with Non-Conformant Data
testdata_varchar__c	Success	100	00:00:00	295	1000	0	0

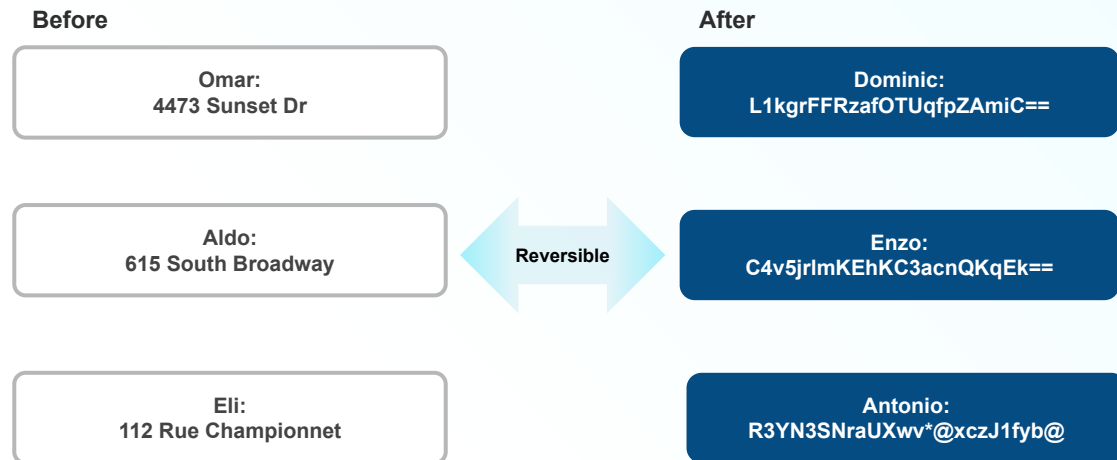
- Monitor UI view now extends past the last 24 hours
- Monitor UI view now includes search for past jobs
- UI now includes filtering by job type and status
- Reports now show total masking job time

Masking: Zip Code+4 V2 Algorithm



- Masking algorithm for full length 9 digit zip codes (5+4)
- Zip Code +4 is now migrated to extensibility framework
- Built-in migration tools for moving masking instances

Tokenization V2 Algorithm



- Enables compliance teams to anonymize data using a reversible token
- Improved token encryption model
- Tokenization Algorithm is migrated to updated framework

Enhanced Profiling Opt-In

Input Table

Email_1 [Numeric]	Email_2 [String(8)]	Email_3 [DATETIME]	Email_4 [STRING(255)]
87127892376	kMFOnH3R	2007-03-31	CleonDayBelisarius@Empire.com
58712897237	qqT5y5xQ	2022-03-04	HariSeldon@Foundation.com
83618405831	1d%teGwc	2021-04-05	GaalDornick@Synnax.com
44008675309	IL4eO7t%	2020-03-05	SalvorHardin@Terminus.com

Email Matching Criteria

Type: STRING
Minimum Length: 52



Matching Column

Email_4 [STRING(255)]
CleonDayBelisarius@Empire.com
HariSeldon@Foundation.com
GaalDornick@Synnax.com
SalvorHardin@Terminus.com

- Early Adopter program for improved data profiling accuracy and speed
- Enhanced Profiling requires an opt-in to feature flag
- First enhancement include type-based constraints for domain assignment for algorithm application
- Reach out to your Customer Success Manager if you are interested

Recent Updates

6.0.11

Released Nov 11, 2021

Continuous Data (Virtualization)

- UI for Password Vault hooks
- OAuth 2.0 support
- SAP HANA Plugin - Port Control
- Oracle TDE Re-Key on VDB Deploy
- TLS 1.0/1.1 EOL

Continuous Compliance (Masking)

- Binary Lookup V2
- UI Updated Look & Feel
- Extended Algorithms UI added

SaaS Applications

- Salesforce Backup/Deploy to sandbox

Data Control Tower (DCT)

- Entitlements Portal
- SOC1 Type 1 Certification
- Expanded APIs
- Storage Reporting

6.0.12

Released Jan, 2022

Continuous Data (Virtualization)

- Multiple Storage Removal
- OAuth 2.0 Web UI & token logins
- SAP HANA Staging Push
- Not susceptible to Log4j vulnerability
- Log4j libraries upgraded to 2.17.1

Continuous Compliance (Masking)

- Microsoft SQL Masking
- Secure Lookup V2
- Free Text Redaction V2

Developer

- Delphix SDK 4.0 with Python 3.8

6.0.13

Released March, 2022

SaaS Applications

- Salesforce Data Protection for production

Continuous Data (Virtualization)

- Staging Push for Microsoft SQL Server
- SAP (Sybase) IQ for RHEL 7.0/7.4/7.9
- Oracle E-Business Suite 12.2.11 in OCI
- MS SQL Server on Microsoft Windows Server 2022 (Standalone & Cluster)

Continuous Compliance (Masking)

- Tokenization Algorithm V2
- Zip+4 Algorithm
- Enhanced Profiling Opt-In (Early Adopter)
- Masking for IBM DB2 12 for z/OS
- Masking for PostgreSQL 13/14

Integration & Monitoring

- FluentD Event & Metric Output
- Masking monitoring improvements