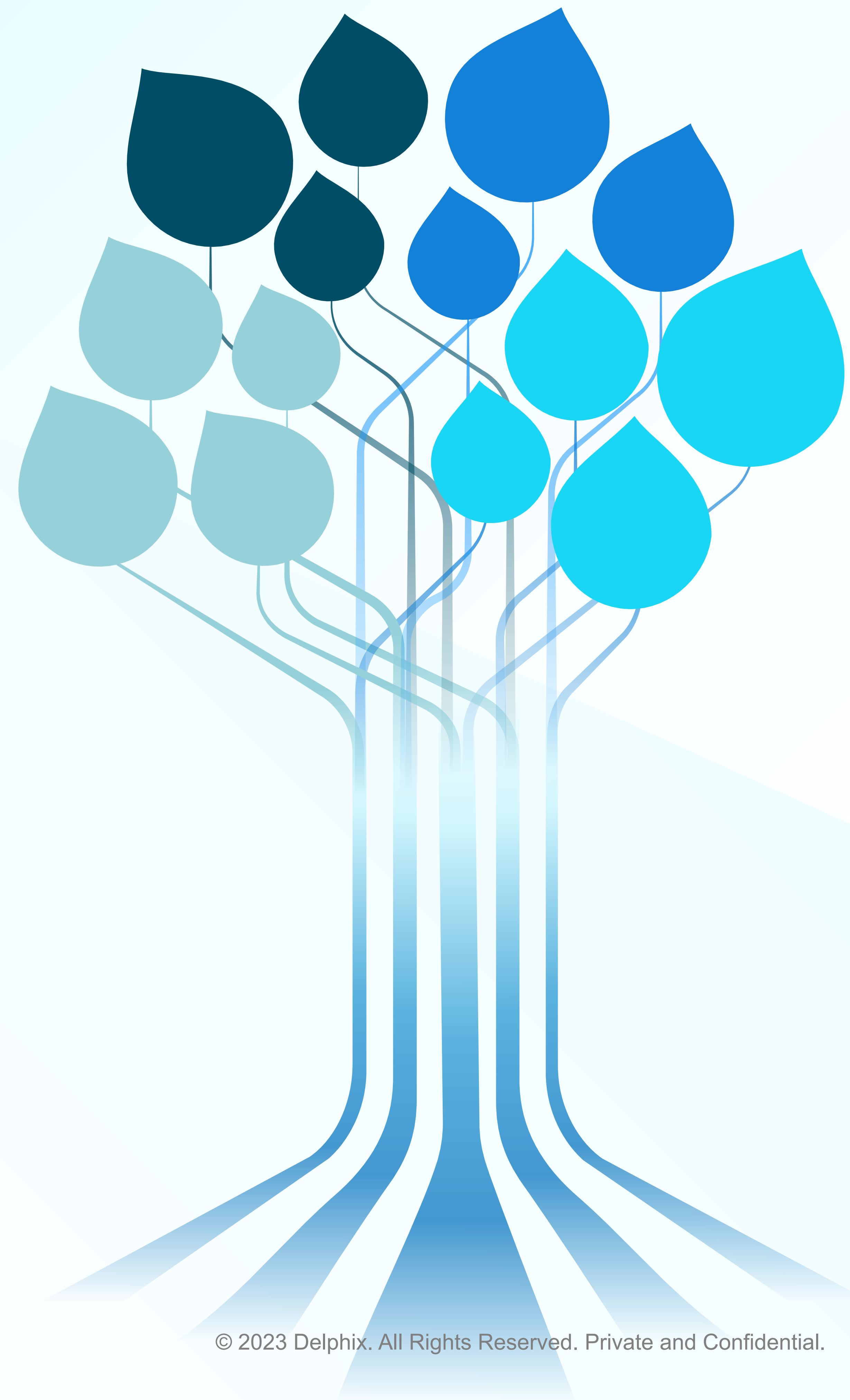


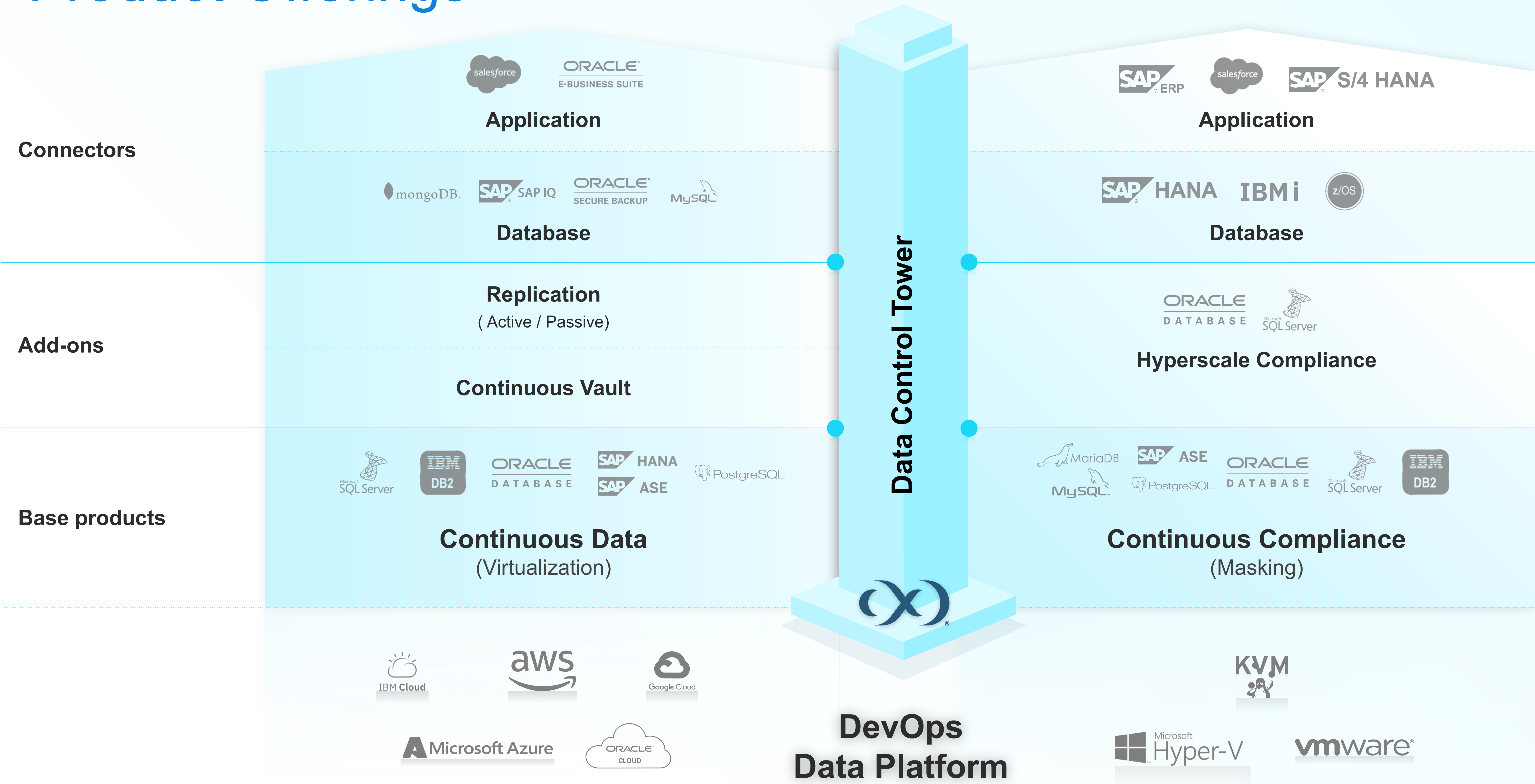


What's New

Delphix January 2024 Product Updates



Product Offerings



Data Control Tower

Single Point of Control for Multicloud Data Governance, Compliance, and Automation at Scale

Data Governance

Data library with catalog, tagging, and attribute-based access controls

Data Compliance

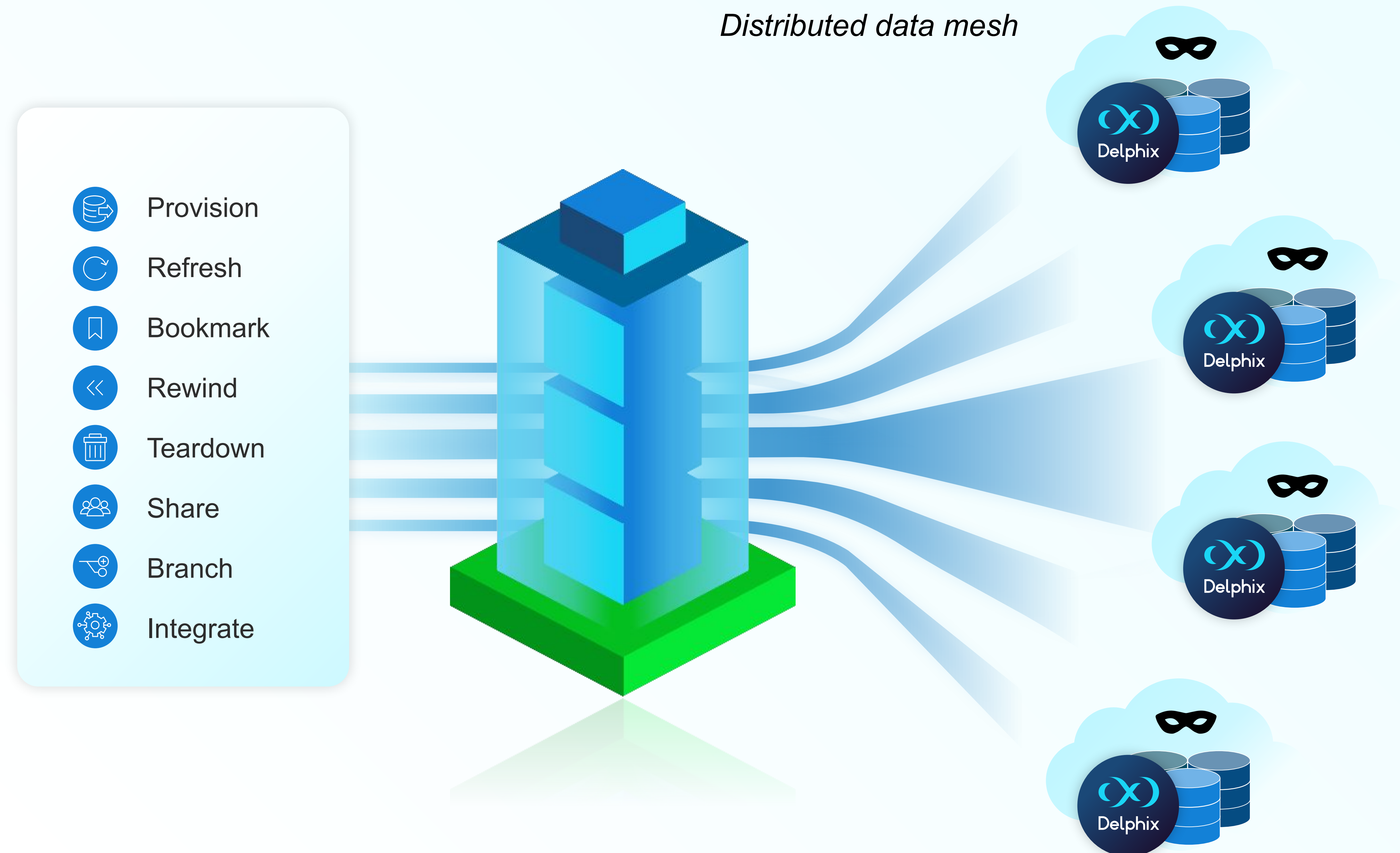
Global sensitive data visibility and central masking orchestration

Data Automation

Self-service developer experience with pre-built DevOps integrations to automate test data within CI/CD pipelines

 Terraform  servicenow  Jenkins  Jira

 GitHub  urban{code}  GitLab



January Feature Highlights

- **Data Control Tower** now allows you to view all global masking algorithms.
- **Data Control Tower** now provides at-a-glance trendlines of engine performance.
- **Migrating** from a Continuous Data to an Elastic Data engine is now faster.

Data Control Tower (DCT)

- Delphix Kubernetes Driver: Virtual databases can be provisioned into containers through Helm charts and kubectl commands using a new, pre-built DCT integration. Teardown of these containers can also be automated, enabling ephemeral infrastructure for Kubernetes-based applications.
- Engine Performance Reports: New Continuous Data and Compliance reports have been added to improve the central management of engine infrastructure performance. You can now view allocated resources and track performance for all connected engines, including disk latency, network latency, and throughput.
- Hyperscale Compliance Jobs: DCT now has support for creating, managing, and executing Hyperscale Compliance jobs. The concept of Engine Pools has been introduced along with several other enhancements to refine the overall experience.
- User Experience Improvements: Several enhancements including customizing the columns across all tables, increased color contrast for better accessibility, simplified navigation across tabs, and a variety of visual style improvements.
- Replication Tag Inheritance: DCT now offers API-based simplified tag management for parent/child replication deployments, optionally syncing source tags to a target replica.
- Oracle and SQL Server Source Linking: Linking sources for Oracle and SQL Server is now supported in the User Experience, along with creating bookmarks.
- Terraform Provider: A new Terraform resource facilitates creating and deleting Oracle dSources. This expands on the existing data source support with the provider.

Continuous Compliance

- Password Vault Support for MariaDB/MySQL: Supported password vault platforms may now be used to authenticate the connections to MariaDB and MySQL databases.
- Extended Email Algorithm: A new email algorithm has been introduced that allows for chaining existing algorithms to produce a combination of name and domain. For example, this will allow the chaining of existing first name, last name, and domain algorithms. This differs from the “Email Unique” algorithm in that the “Email Unique” algorithm aims to generate a unique email address with a string of characters rather than a standard human-readable name.
- Masking User Experience Improvements: The masking user experience overhaul continues with an update to the environment's ruleset page.
- New Classifiers: In Automated Sensitive Data Discovery, classifiers identify different data types. We've added new classifiers for gender, sexual orientation, house number, marital status, language, ethnicity, blood type, prescription drugs, companies, job titles, and departments.
- New Secure Lookup Algorithms: To pair with the new classifiers, we've added new Secure Lookup Algorithms for marital status, language, ethnicity, blood type, prescription drugs, job titles, and department.
- SAP HANA: The JDBC Driver version 2.18.13 for SAP HANA SP07 is now supported.

Continuous Data

- NFS Encryption: Using encryption over NFS between Continuous Data engines and the target and staging hosts is now supported. Please consult with your account team as to whether this is an appropriate fit for your needs.
- MySQL on Linux: Manual Ingestion has been renamed to Staging Push to standardize on Dephix's established ingestion architectures. Strengthened the refresh and snapshot workflow to minimize occasional failures. Please review the upgrade path for installation guidance.
- Oracle E-Business Suite (EBS): Updated our virtual database provisioning hooks to support the Solaris operating system. We recommend this release to all users as it contains various bug fixes and security fixes.
- Couchbase: We have added support to define multiple buckets, configure RAM sizes, and the ability to ingest multiple full backups. Additionally, the connector will now report data source sizing.
- Microsoft SQL Server Backup: We have enhanced the usability of data ingestion from Microsoft SQL Server on Azure by dynamically modifying the Access Control Lists (ACLs) for files and folders that different staging and target environment users own.
- Documentation Updates: We have made broad improvements across multiple areas of our documentation, including the Delphix Glossary, General Topics, and PostgreSQL.

November '23 Updates

Compliance Services for Salesforce

- Resume Masking jobs: DCS for Salesforce jobs can now be resumed in case of errors. Resuming only masks previously unmasked records and skips all masked ones.
- Expanded Masking Job User Experience: A new job details page includes masking progress information, masking record counts, a resume feature, metadata summary, and others.

Compliance Services for Azure

- Data Flow Parameterization: In collaboration with Microsoft, it is now easier to rapidly deploy masking across thousands of tables in a single Azure Data Factory (ADF) pipeline, letting users manage relevant metadata as parameters. We're releasing templates to expedite the deployment process for common data sources, starting with Snowflake.

Data Control Tower (DCT)

- Kubernetes (K8s) Driver: To expand our Kubernetes Driver's capability, we now support AWS Elastic Kubernetes Service (EKS), introduced DCT API Usage monitoring, and fixed various issues to ease adoption.

Continuous Compliance

- New String Chaining Framework: A new framework, StringAlgorithmChain, has been added to simplify the process of creating chained algorithms. This works specifically with String-type algorithms and allows for the creation of output based on the combination of those algorithms.
- Expanded Classifiers: Automated Sensitive Data Discovery has been expanded to add data discovery for medical codes (CPT, ICD-9, ICD-10), IBAN numbers, swift codes, and bank account routing numbers. Further, we've updated the "payment amount" classifier and added a type classifier for license plates.
- Expanded Algorithms: New masking algorithms have been added for swift codes and bank account routing numbers.
- SAP Accelerator: Certified SAP HANA SPS 07, removed the `engine` command to simplify configuration, and improved error messaging to ease troubleshooting.

Continuous Data

- Decreased VDB Downtime: There are two types of upgrades for Continuous Data: full upgrades, where VDB downtime is incurred during a system reboot, and deferred updates, where there is no system reboot and, therefore, no downtime.
- Object Storage Modification: Key rotation, endpoint URL, regions, and authentication types may now be modified for existing connected object storage through the API and CLI.
- NFS Encryption: We have extended support for Repave and Oracle RAC configurations with NFS encryption.
- IBM Db2 HealthChecker: The HealthChecker can now validate staging and target environment configuration to simplify implementation. This joins existing support for Oracle E-Business Suite (EBS).
- PostgreSQL: Provided WAL Logs will no longer automatically roll forward a dSource. This action will only occur when a dSource snapshot is taken to eliminate unknown changes.
- SAP HANA: Certified SAP HANA SPS 06 and 07.

Compliance Services for Salesforce

- Custom Batch Size: Salesforce masking jobs now offer a custom batch size as an optional parameter. When unselected, we will automatically calculate the batch size. Custom batch size enables the masking of tables whose updates cause row locks and facilitate granular performance tuning.

Compliance Services for Azure

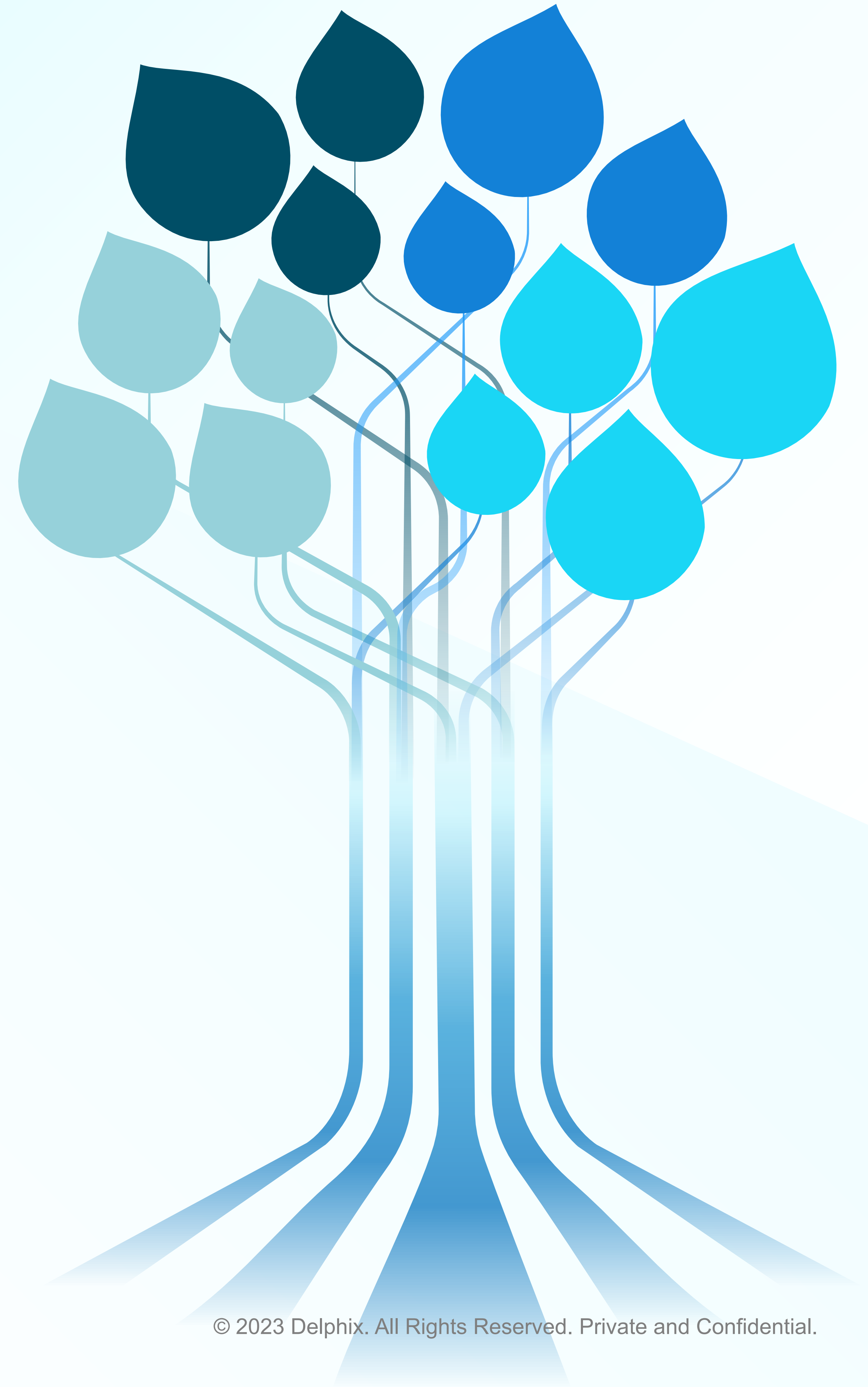
- Private Link for ASDD: Private Link is now supported for ASDD pipelines (in addition to masking pipelines). This lets you ensure that data sent to DCS for profiling only moves within your virtual private network and never traverses the public internet.

Hyperscale Compliance

- Parquet Support: Hyperscale compliance now supports masking Parquet files. Note that the Hyperscale Orchestrator must be sized correctly to handle Parquet files.




January 2024 Updates



Data Control Tower (DCT)

- **Expanded Source Linking:** Over the past few years, we have introduced Staging Push to allow users to bring their data to Continuous Data. The DCT UI now supports linking for Oracle and SQL Server using Staging Push. Further, we've expanded standard linking to SAP ASE, PostgreSQL, Db2, MySQL, HANA, and MongoDB.
- **Hyperscale Compliance UI Enhancements:** Several improvements have been added, including enabling the management of Continuous Compliance Engine assignments for Hyperscale Jobs.
- **DCT Toolkit Enhancements:** Based on customer feedback, several improvements have been made to our fully supported CLI for DCT. Notably, dct-toolkit allows users to provide engine names as values for 'id' options.
- **Improved Replication Visibility:** Replication is used for data movement, disaster recovery protection, Sensitive Data Distribution, and more, which requires setting up relationships between Continuous Data Engines. To provide better visibility on these relationships, we have added them to Data Control Tower. To further simplify this user experience, the target Continuous Data Engine and dataset are now linked together.

Data Control Tower (DCT)

 DATA CONTROL TOWER

[Home](#)[Data](#)[Compliance](#)[Insights](#)[Admin](#)

Compliance Engines

Hyperscale Orchestrators

Compliance Jobs

Algorithms

Algorithms

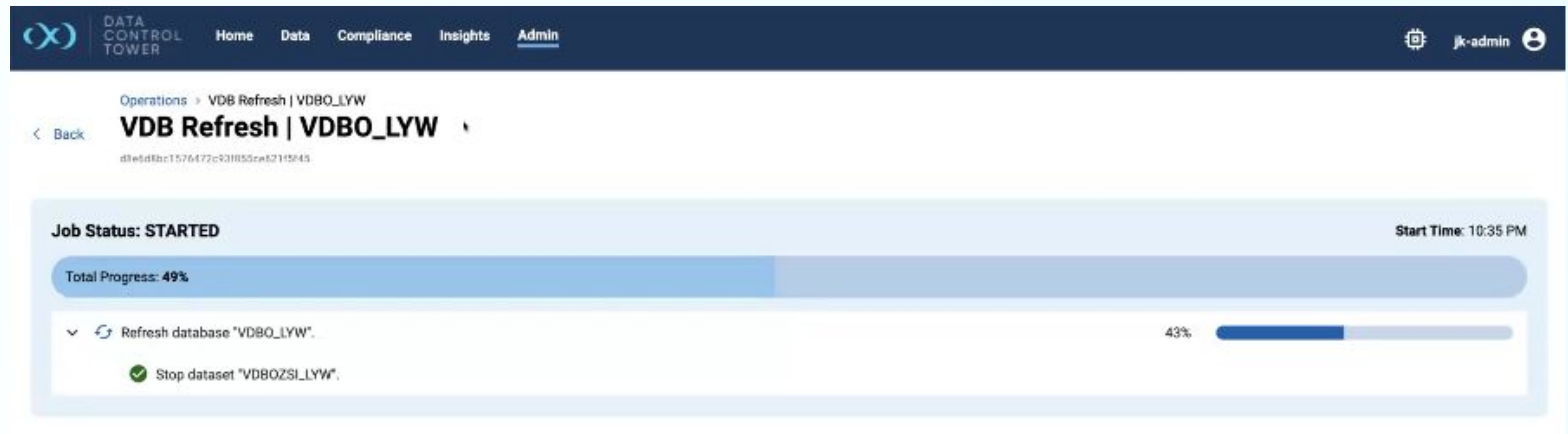
View and manage algorithms used to mask sensitive data.

Search (All) ▾

Name	Plugin	Framework	Description	Tags
dlpx-core:Redact Digits-Zero	dlpx-core	Redact Input	This algorithm replaces the digits of...	<div>Add Tags ></div> <div>View ></div>
USCitiesLookup	dlpx-core	Secure Lookup	Top 300 US cities by population den...	<div>Add Tags ></div> <div>View ></div>
dlpx-core:Age SL	dlpx-core	Secure Lookup	Ages ranging between 1 to 99 with ...	<div>Add Tags ></div> <div>View ></div>
CommentLookup	dlpx-core	Secure Lookup	Contains 1 generic value	<div>Add Tags ></div> <div>View ></div>
BusinessLegalEntityLookup	dlpx-core	Secure Lookup	Legal business names	<div>Add Tags ></div> <div>View ></div>
dlpx-core:FirstName	dlpx-core	Name	This is a default instance of the Firs...	<div>Add Tags ></div> <div>View ></div>
RepeatFirstDigit	dlpx-core	Repeat First Digit	This algorithm masks a four-digit nu...	<div>Add Tags ></div> <div>View ></div>
SwiftCode SL	dlpx-core	Secure Lookup	300 random valid swift codes of ba...	<div>Add Tags ></div> <div>View ></div>
NameTK	dlpx-core	Tokenization		<div>Add Tags ></div> <div>View ></div>
dlpx-core:Department SL	dlpx-core	Secure Lookup	General departments of an organiza...	<div>Add Tags ></div> <div>View ></div>
AddrLookup	dlpx-core	Secure Lookup	Common US Address line 1 values	<div>Add Tags ></div> <div>View ></div>
TimeRange	dlpx-core	Segment Mapping	A instance of Segment Mapping fra...	<div>Add Tags ></div> <div>View ></div>
DrivingLicenseNoLookup	dlpx-core	Secure Lookup	Dummy US Driving Licenses	<div>Add Tags ></div> <div>View ></div>

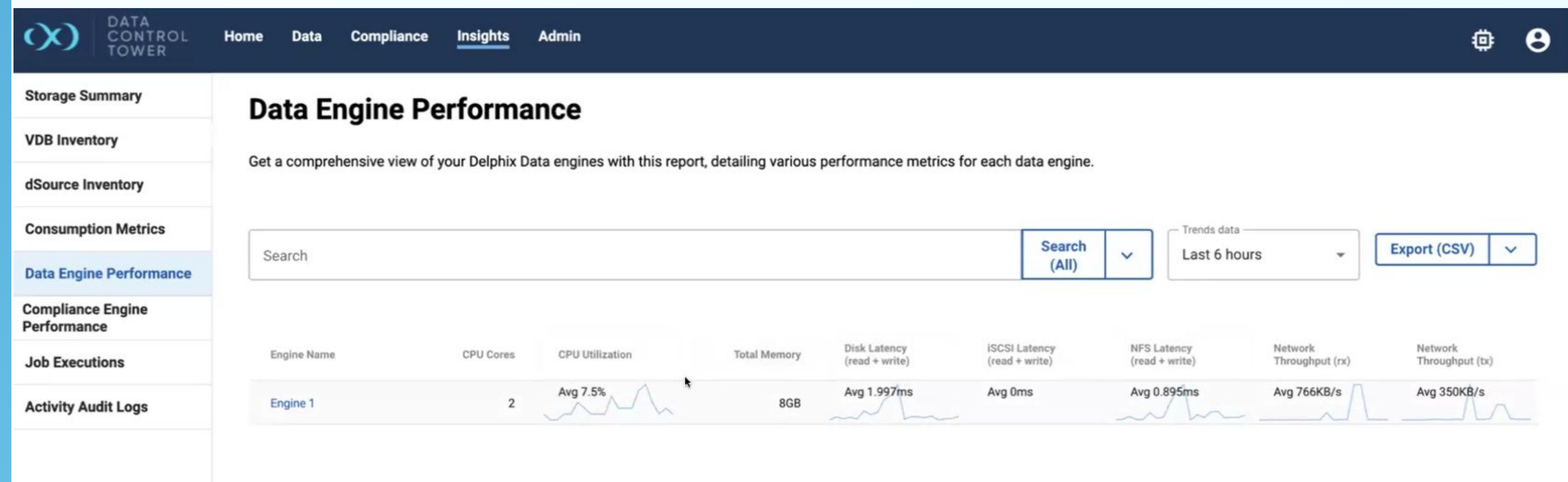
Algorithm Centralization: We plan to centralize orchestration and control in Data Control Tower. To enable better visibility into compliance, masking algorithms across all connected Continuous Compliance Engines can now be centrally viewed in DCT.

Data Control Tower (DCT)



Continuous Data Jobs Progress: Users can track job progress in real-time through the Operations UI.

Data Control Tower (DCT)



Engine Performance Trendlines: Historical trendlines have been added to the recently introduced engine performance reports.

Continuous Compliance

- **Character Replacement Algorithm Framework:** This framework allows for creating rules to replace specific characters in a string with other characters. For example, you can use this framework to remove inconsistent punctuation in data to maintain referential integrity across data sources.

Continuous Data

- **Documentation Updates:** We have made broad improvements across multiple areas of our documentation, including the Delphix Glossary, Datasets' Getting Started, and PostgreSQL.
- **UI for Object Storage Connectivity Modification:** We have implemented several enhancements to simplify the modification of object storage configuration. Specifically, the following can be modified: key rotation for security (key-based authentication), endpoint URL, region, and the ability to change between key-based and profile-based authentication.
- **Improved Elastic Data Migration:** Leveraging Elastic Data with Continuous Data provides significant cost savings by leveraging object storage and block storage. We have decreased the time to execute migrating an engine from a standard Continuous Data Engine to an Elastic Data Engine without the need for replication.
- **TDE support for Hardware Security Module (HSM) solutions:** Managing Oracle TDE (Transparent Data Encryption) across multiple Oracle environments can be challenging. TDE management solutions have been introduced to solve this challenge and are growing in popularity. Delphix can now connect to and leverage tools like OKV and CypherTrust to perform all operations within TDE environments managed by any of these tools.
- **SAP HANA:** HANA SPS 06 and SPS 07 are now supported on the SUSE Operating Systems.
- **MongoDB:** MongoDB is now supported on the RHEL 9.0 Operating System.

Compliance Services for Salesforce

- **Sorted Masking:** Presorting tables helps to prevent row locking when dealing with large data volumes.
- **Independent Metadata Management:** Provides the option to disable and re-enable metadata outside of a masking job. This can improve performance as metadata can now be disabled once before masking starts and re-enabled only once after all masking jobs are complete.

January Product Version Releases

Product/Connector	Version	Release Date
PostgreSQL Connector	v4.2.1	January 23, 2024
Data Control Tower	v13	January 29, 2024
Continuous Data	v19	January 25, 2024
Continuous Compliance	v19	January 25, 2024
MongoDB Connector	v1.3.0	January 31, 2024

Delphix Product Updates Blog - released monthly

Product Updates

Delphix Platform

June 2023

PLATFORM JUN 29, 2023

Delphix Platform June 2023 Product Updates

The June 2023 updates to the Delphix platform include a new Software-as-a-Service offering for Microsoft Azure, an enhanced search interface and operations dashboard in Data Control Tower, and more.

Read more →

Product Updates

Delphix Platform

May 2023


PLATFORM MAY 30, 2023

Delphix Platform May 2023 Product Updates

The Delphix Platform's top new functionalities include Expanded data discovery, Oracle table space subsetting, and improved Data Control Tower developer experience.

Read more →

Data Privacy and Protection




PLATFORM MAY 11, 2023

5 Takeaways from Data Company Summit Miami 2023

Featuring luminary speakers from companies across many industries, Delphix's Data Company Summit 2023 was a great opportunity for IT leaders to learn how to unleash continuous innovation and compliance.

Read more →




PLATFORM APR 27, 2023

Introducing the Delphix Spoke for ServiceNow

The Delphix Spoke for ServiceNow provides out-of-the-box, automated workflows and actions, as well as a self-service catalog to enable application teams to manage their test data environments.

Read more →




PLATFORM FEB 13, 2023

Delphix and DataStax Automate Cassandra Data for CI/CD Pipelines and Application Migration

Find out how Delphix and DataStax automates Cassandra data provisioning for DevOps and Analytics

Read more →



PLATFORM OCT 11, 2022

Delphix Launches New Compliance Service Integrated with Microsoft Intelligent Data Platform

Using Delphix in conjunction with Microsoft Intelligent Data Platform makes the delivery of on-demand, compliant data easy for all stakeholders

Read more →

[Delphix Platform Product Updates](#)