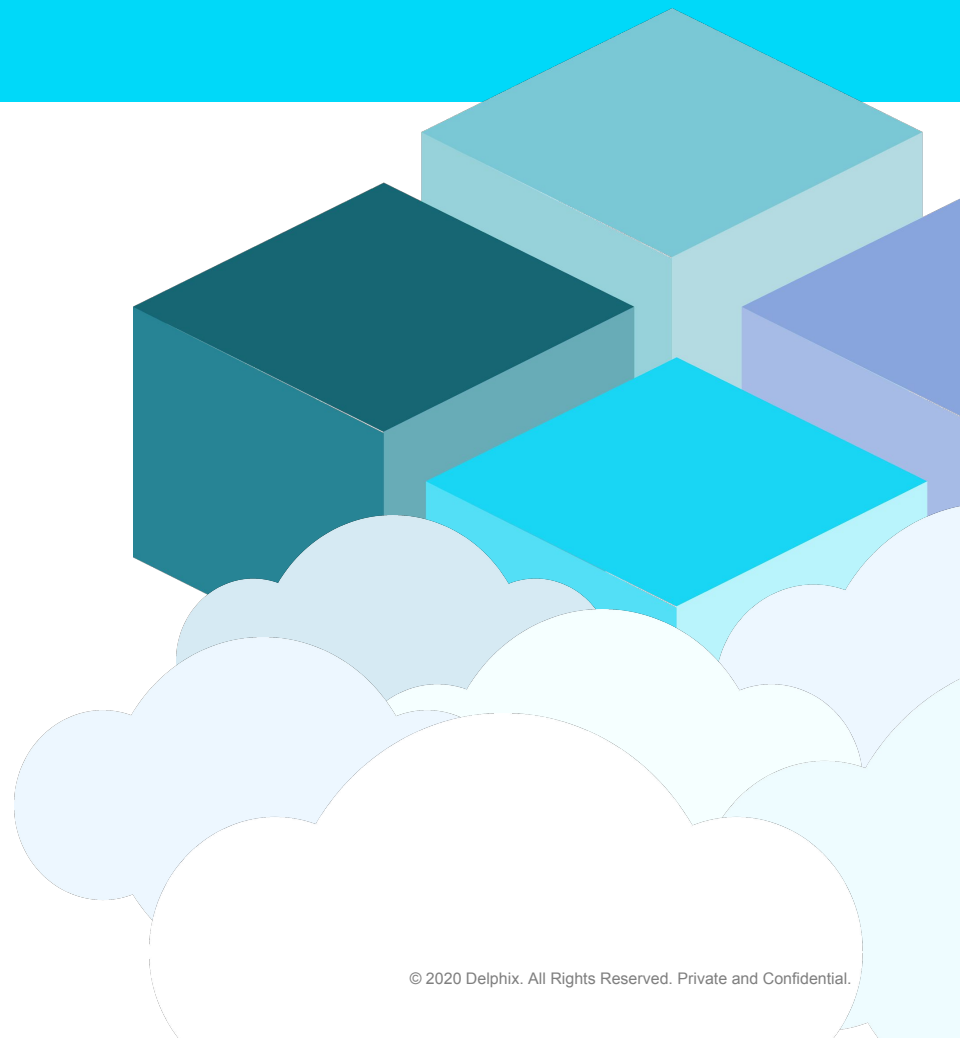


Delphix 6.0.5 and More

November 2020

Product Marketing



Delphix Data Platform 6.0.5: What's New

- High Level Updates
 - Character Mapping Algorithm
- Data Control Tower Updates
 - Attributes/Groups Support
 - Upgrade Notification
- Technical Updates
 - Expanded Replication
 - Target Environment Lockdown (CLI/API)
 - Upgraded Windows Connector
 - Staging Push - Db2 Plugin
 - Snapshot Metadata Visibility
- Certifications: Virtualization, Masking
- Deprecations

Character Mapping Algorithm

- We have created a replacement for the Segment Mapping algorithm, the Character Mapping algorithm.
- New algorithm will be faster and require less memory than the existing segment mapping algorithm in most configurations.
- There is no length limitation for the input string and can handle non-ASCII characters.

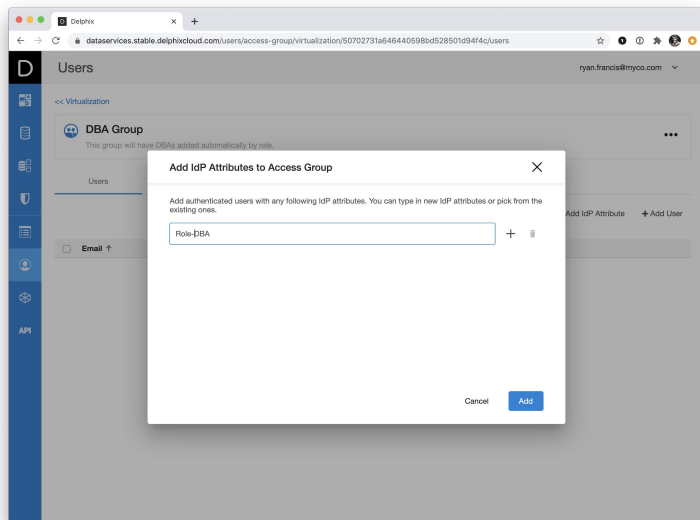
Character Mapping Algorithm



Ability to mask non-ASCII characters

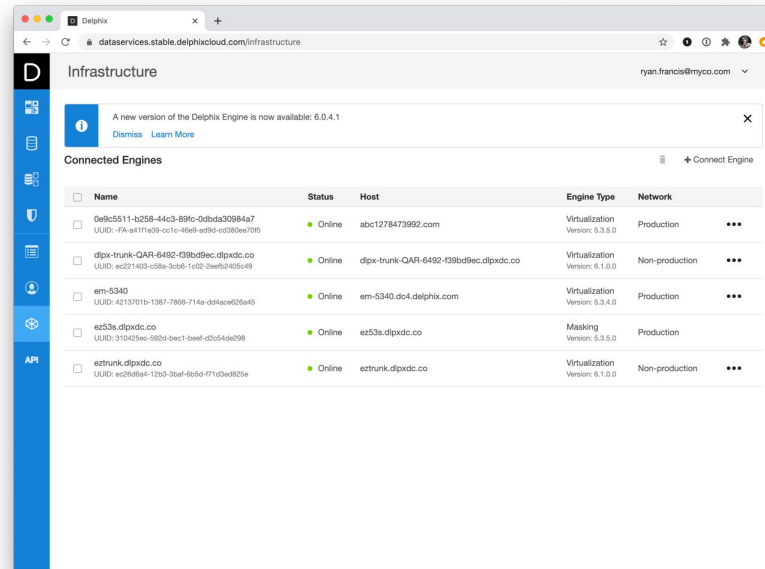
Data Control Tower Attributes/Groups Support

- We recently introduced the concept of user groups and data access groups in Data Control Tower (formerly Central Management.) This enables you to manage data and users across engines, greatly simplifying data access.
- We have now added the ability to control data access via Identity Provider attributes.
- You can create these attributes directly in your identity provider(IDP) or by federating Active Directory or LDAP with your IDP.



Data Control Tower Upgrade Notification

- We will now directly notify users in the Data Control Tower when new versions of appliance software are available.
- This represents a continued integration between our SaaS and appliance offerings that ensures users are aware of the latest offerings and paves the way for more direct communication with you.

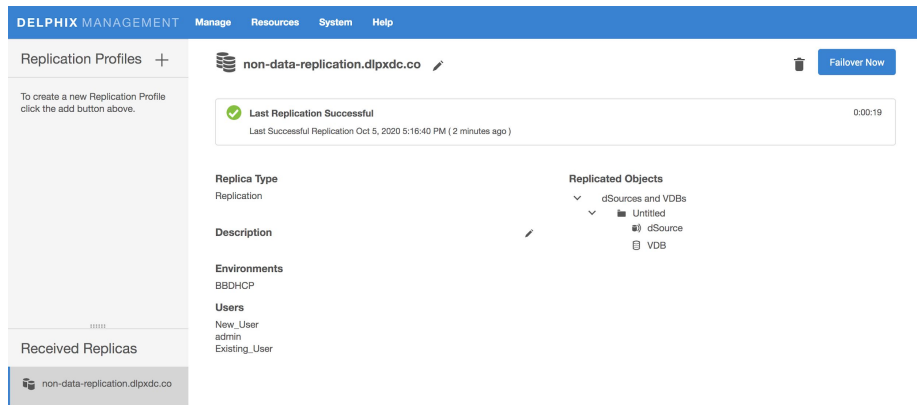


Expanded Replication

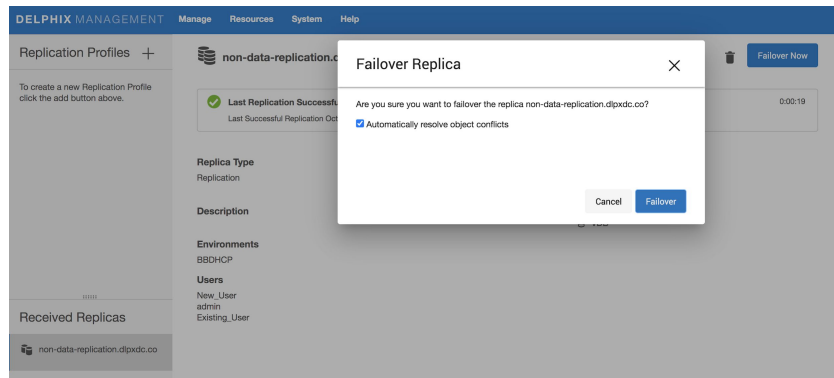
- You may be using replication to facilitate moves of data across network boundaries, to the cloud and for DR purposes.
- In the 6.0.5 release, we now support replication of non-data objects:
 - Delphix Users (*domain users only - system users not included)
 - Roles
 - Permissions
 - Authorizations
 - Policies
 - Database configuration templates
- Requires use of automatic conflict resolution (Smart Failover) during failover
 - Non-data replication is expected to introduce more conflicts during failover due to default objects created at system setup (e.g. default policies)
- Workflow
 - Replication workflow remains the same, no new configurations or setup required
 - Non-data replication and Smart Failover are enabled by default
 - Replication of non-data objects is passive and automatic - the same way environments and environment users are replicated
 - When Entire Domain is replicated: all non-data objects are replicated
 - When specific data objects are replicated: associated non-data objects are replicated

Replication UI

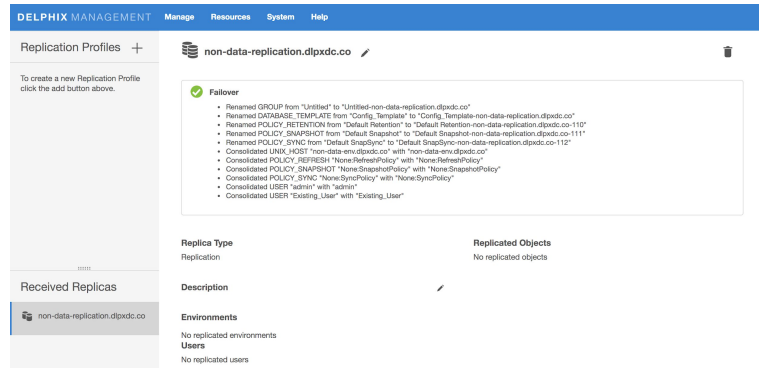
- Following replication, the replica namespace on the target engine displays information on the replicated users:



- Perform failover using Smart Failover:



- Following Smart Failover, the replica namespace page will summarize the results of the failover:

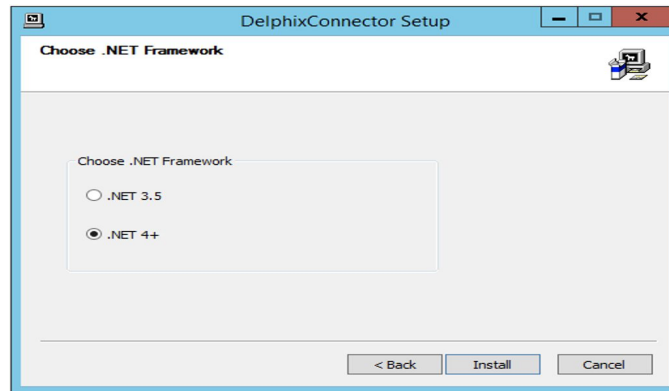
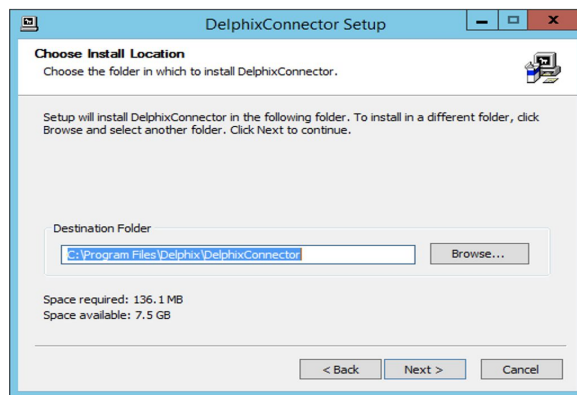
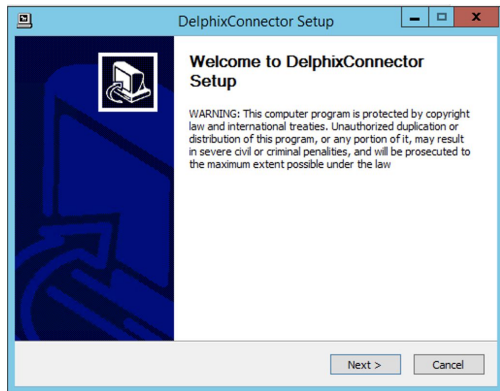


Target Environment Lockdown (CLI/API)

- Delphix Engines frequently are shared by multiple application teams who provide their own target environments.
- Delphix Virtualization has added functionality that will allow an engine-wide lock down of target environments coupled with the ability to attribute VDB provision permissions on specific environments to user groups.
- This will prevent one team from accidentally provisioning VDBs to another team's infrastructure.
- The UI will be introduced in Data Control Tower (formerly Central Management) at a later date.

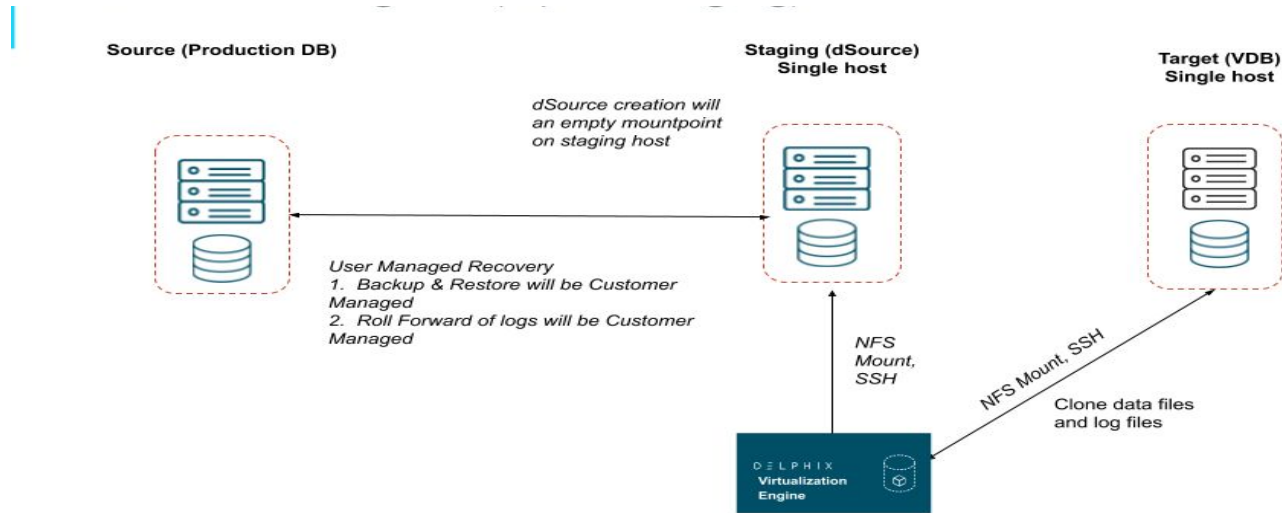
Upgraded Windows Connector

- The Windows Connector now supports newer versions of Microsoft's .NET framework (4.x), which encompasses myriad higher security standards, new functionality, etc.
- Previously, the connector relied on .NET 3.5 due to two dependencies: SQL Server and Powershell, which both have been removed with SQL Server 2016+ and Powershell update in 6.0.3.0.
- Now along with .NET framework version 3.5, all later versions based on CLR 4.0 will be supported by this version of Windows Connector.
- As of 6.0.5.0, Instead of two different installers for .NET Framework 3.5 and .NET Framework 4.x, we now have a single installer only (DelphixConnectorInstaller.exe). This installer will support both .NET Framework versions. Version for this installer is 1.18.0.



Staging Push - Db2 Plugin

- We now support an extensible model for ingesting Db2 data.
- In this new, additive model, we will support you manually performing a restore & roll forward of your staging database to Delphix from native backups or arbitrary third-party backup tools which integrate directly with Db2.
- This will allow you to bring data from whatever system or backup you have and restore it to an exact point in time, as needed.



Snapshot Metadata Visibility

- Allow you to view the snapshot creation metadata for AppData-based plugins
- Data being displayed is based on snapshotSchema property in AppData
- Db2 is the first plugin to include the snapshotSchema property

Plugins

Filter: none

Pretty Name	Version	Namespace
Unstructured Files	1.0.0	
hana-v2-replication	5	

```
prettyName : hana-v2-replication
language : PYTHON27
name : bdc01564-2598-4d08-a13b-8f30d52f7b9e
version : 5
▶ buildApi {4}
▶ hostTypes [1]
  rootSquashEnabled : true
  defaultLocale : en-US
▶ messages [0]
▼ snapshotSchema {3}
  additionalProperties : false
  type : object
  ▼ properties {9}
    ▶ serviceMapping {1}
    ▶ executionTimestamp {1}
    ▶ shippedLogPosTimestamp {1}
    ▶ replayLogPosTimestamp {1}
    ▶ hanaVersion {1}
    ▶ sourceSID {1}
    ▶ pluginVersion {1}
    ▶ delphixMount {1}
    ▶ sourceTenantDatabase {1}
```



Certifications

The following certifications were completed through November.

- ESX 7.0
- NFS v4 support on AIX 7.1+
- IBM Cloud Catalog. Specifically, we support the following instances:
 - mx2-8x64
 - mx2-16x128
 - mx2-32x256
 - mx2-48x384
- Oracle Cloud. The following are newly supported instance types:
 - VM.Standard2.8
 - VM.Standard2.16
 - VM.Standard2.24
- Virtualization Certifications
 - ASE 16.0 on RHEL8.1 and RHEL8.2 on 6.0.4+
 - ASE 16.0 on SLES12.4 on 6.0.4+
 - Oracle 18 on RH7.9 on 5.3.9 and 6.0.4+
 - Oracle 19.7 on RH7.9 on 6.0.4+
 - Oracle 19.7 (April 2020 PSU) on RH7.8 and RH8.0-8.2 on 5.3.9+ and 6.0.3+
 - Db2 11.5 on RH 8.0-8.2 on 5.3.9+ and 6.0.4+
- Masking Certifications
 - MySQL 8
 - Postgres SQL 12
 - Db2 LUW 11.5
 - Oracle Database Cloud Services on Virtual Machines
 - Oracle Database Cloud Services on Bare Metal

Deprecations

The following list of OS and DB versions are now past their respective support windows. Delphix will deprecate these versions to stay in line with Microsoft, Oracle, and SAP lifecycle policies:

- Windows 2008 R2: Microsoft End of Extended Support (EoES) January 4th, 2020
- SQL Server 2008/2008 R2: Microsoft End of Extended Support (EoES) July 9th, 2019
- Oracle 10: Oracle End of Extended Support (EoES) July 2013
- SAP ASE 15.0.3: SAP End of Life (EoL) March 31st, 2015