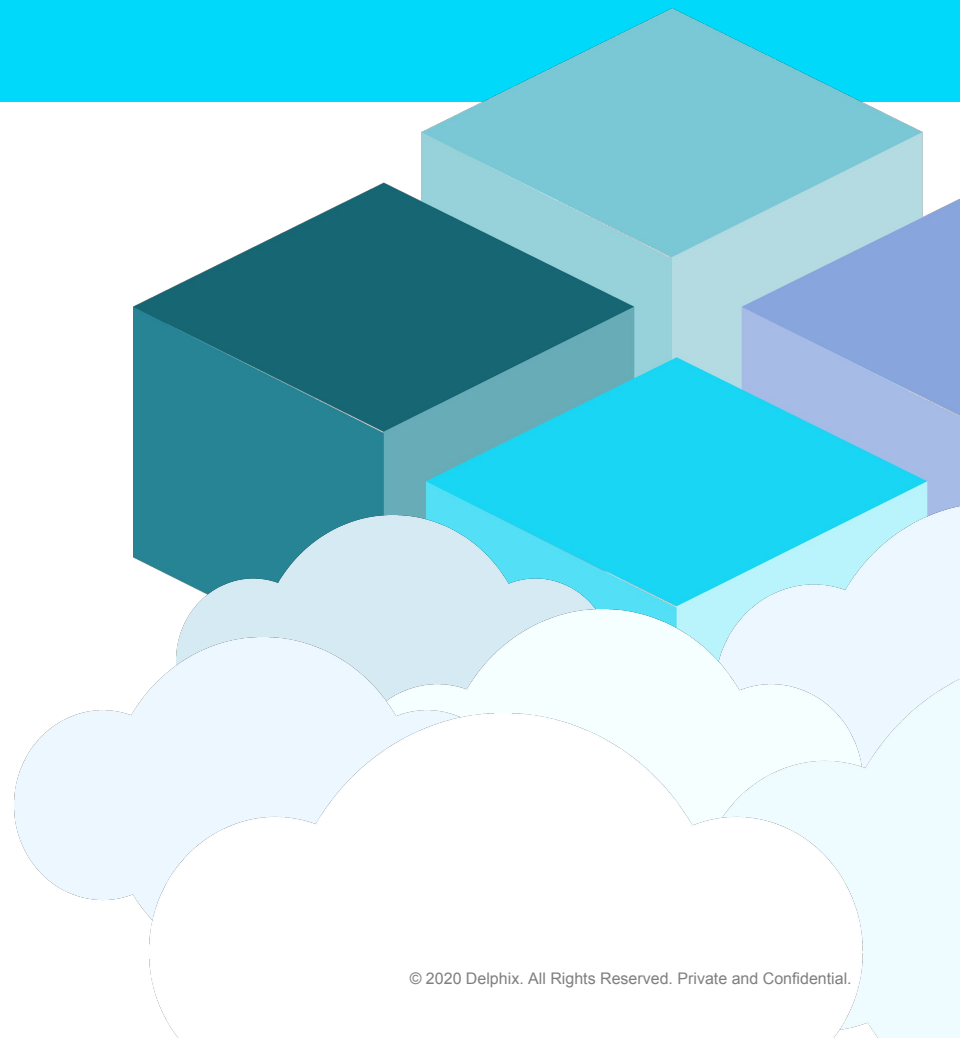


Delphix 6.0.1

March 2020

Product Marketing



Delphix DataOps Platform 6.0.1: What's New

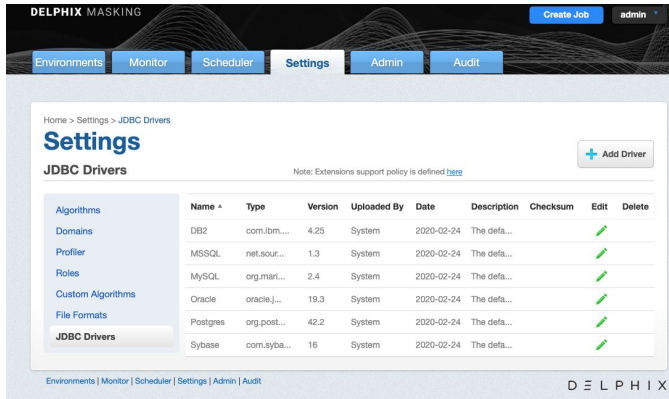
- High Level Updates
 - Masking Extended Connectors
 - Masking API Updates
 - SQL Server CDC Support
 - Masking Sync Support for Tokenization and Reidentification
- Technical Updates
 - Upgrades to 6.0.1
 - Third Party Library Updates
 - Certifications: Virtualization, Hypervisors

Masking Extended Connectors

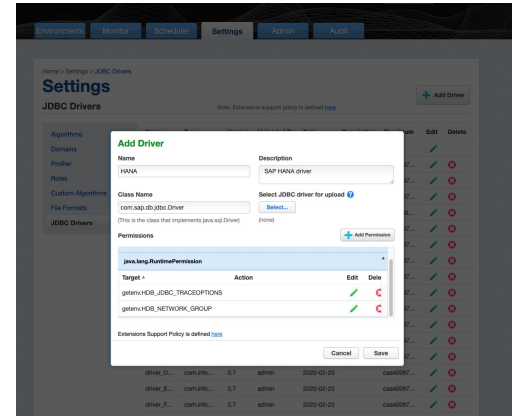
- Enable you to add JDBC drivers to the masking engine to mask new data sources
- Extend masking to other common databases like SAP HANA, Informix, etc.
- Extended connectors do not require you to develop any code. To create a connector, you simply supply the JDBC driver provided by your database vendor.
- Any relational database that supports JDBC access is a good candidate for using with an extensible connector.
- The primary responsibility to upload JDBC drivers will lie with you. The underlying API and framework that Extended Connectors use will be supported by Delphix. Data source specific issues that arise while attempting to mask using an Extended Connector are not supported by Delphix.

Masking Extended Connectors - Workflow

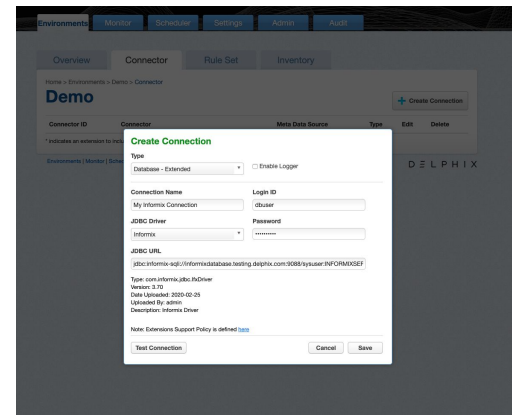
Step 1: Select JDBC Drivers menu



Step 2: Add driver



Step 3: Create connection



Masking API Updates

- Before: Configure delimited and fixed file masking only via GUI
- After: Control delimited and fixed file masking via API or GUI

SQL Server CDC Support

The screenshot shows the 'Target Configuration' step of a wizard. On the left is a vertical navigation pane with steps: Target Environment, Target Configuration (selected), Policies, Masking, Hooks, and Summary. The main area contains the following fields and options:

- Untitled**: A dropdown menu.
- Database Name**: A text input field containing 'VTIL_COY'.
- Recovery Model**: A dropdown menu set to 'Simple'.
- Pre Script**: A text input field containing 'Pre Script'.
- Post Script**: A text input field containing 'Post Script'.
- VDB Configuration**: A section header.
- VDB Name**: A text input field containing 'VTIL_COY'.
- Auto VDB Restart**: A toggle switch with 'Enable' selected.
- Change Data Capture (CDC)**: A toggle switch with 'Enable' selected.

At the bottom right are four buttons: 'Cancel', 'Back', 'Next' (highlighted in blue), and 'Submit'.

- Expanded support for SQL Server databases using [Change Data Capture \(CDC\)](#)
- Preserve CDC data for SQL Server VDBs

Masking Sync Support

Added ability to sync two new types of objects:

- Tokenization jobs
- Reidentification jobs

Expands the number of objects supported by the sync feature which includes profiling and masking jobs to the new objects above.

Upgrades to 6.0.1

- Upgrading to 6.0.1 will be an in-place upgrade like other Delphix releases
- Engage the Delphix customer support team to upgrade to this release
- Upgrade paths:
 - Customers on Delphix Platform versions lower than 5.3.6 need to upgrade to the latest 5.3.x release
 - Migrating to 6.0.1 is supported from 5.3.6.0, 5.3.7.0, 5.3.7.1, 5.3.8.0, and 5.3.8.1.

Technical Updates

Third Party Library Updates: Updated Java JDK to the latest available version 1.8u242.

Certifications

Virtualization:

- ASE 16 and 15.7 with Solaris SPARC 11U3 and SPARC 11U4 Support

Hypervisor:

- VMware ESX 6.5 U3
- VMware ESX 6.7 U3