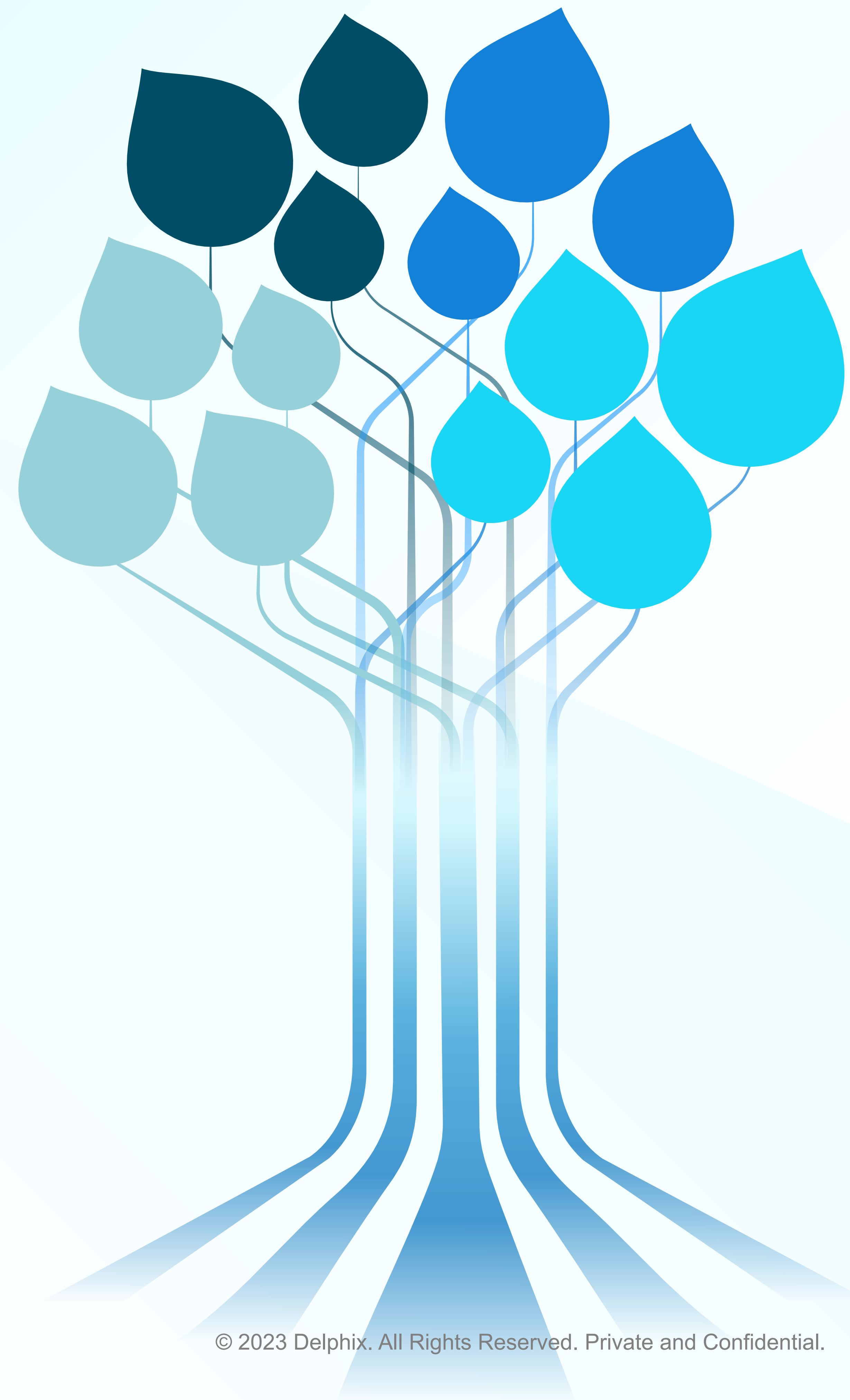


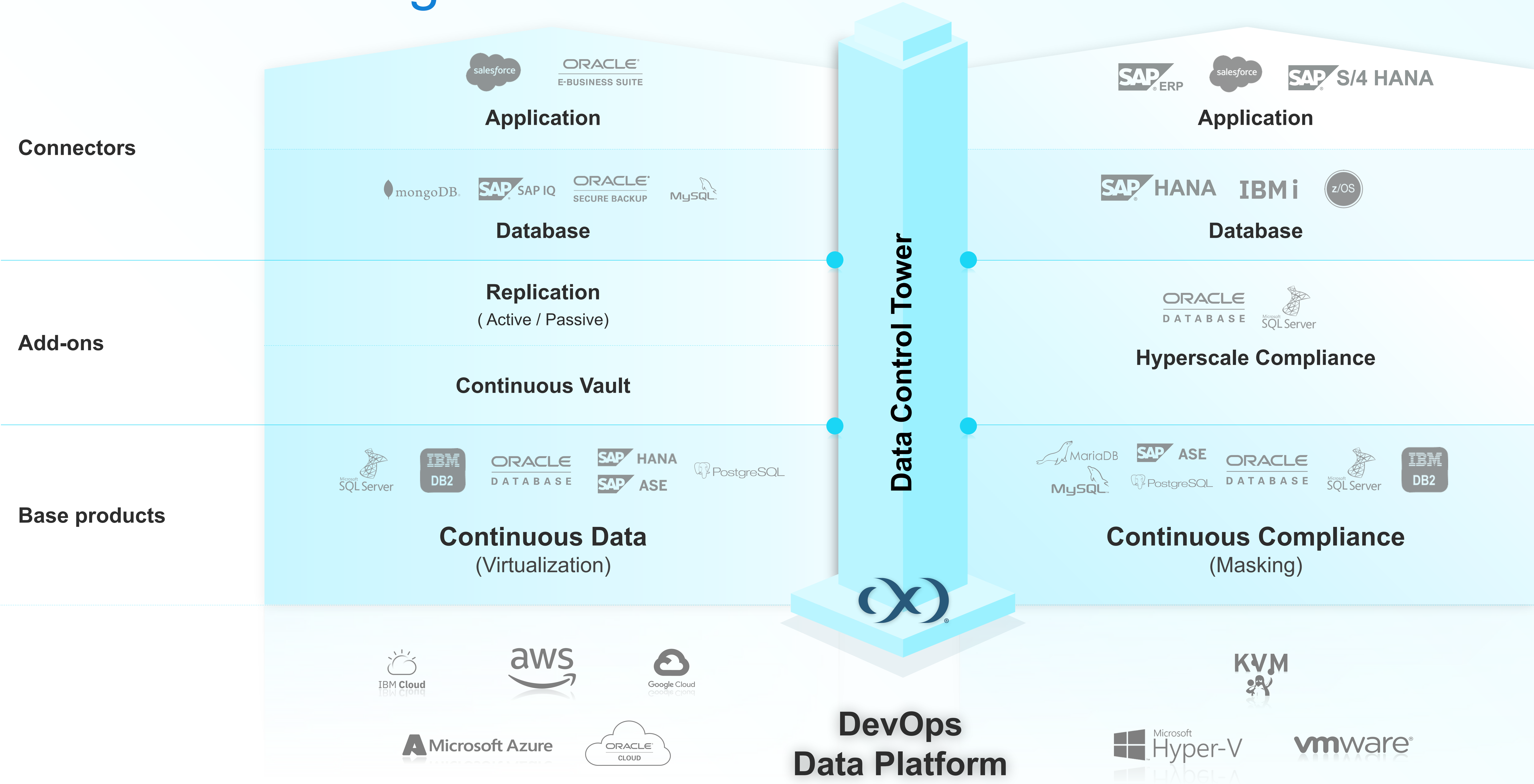


# What's New

Delphix June 2023 Product Updates



# Product Offerings





# Data Control Tower

Single Point of Control for Multicloud Data Governance, Compliance, and Automation at Scale

## Data Governance

Data library with catalog, tagging, and attribute-based access controls

## Data Compliance

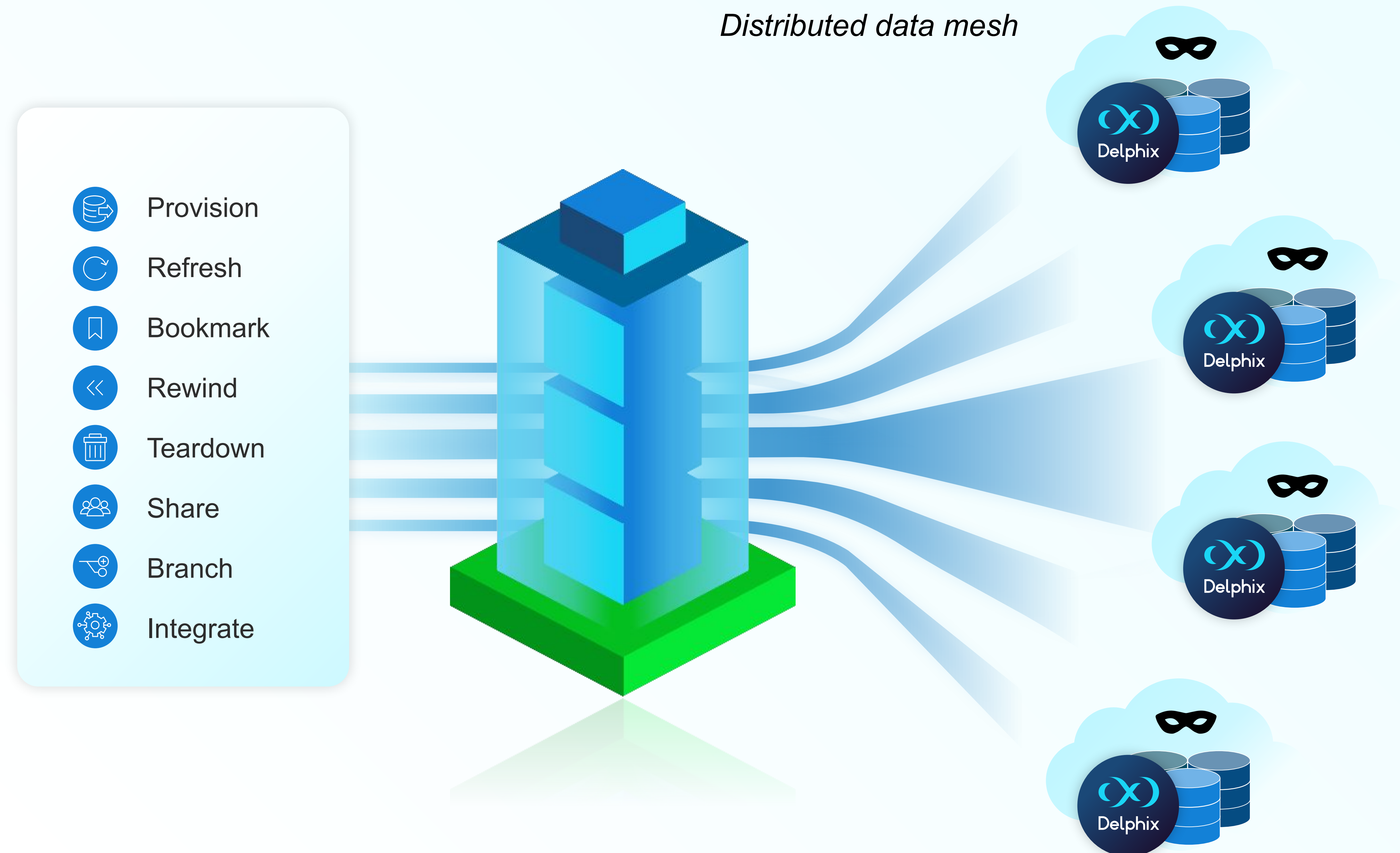
Global sensitive data visibility and central masking orchestration

## Data Automation

Self-service developer experience with pre-built DevOps integrations to automate test data within CI/CD pipelines

 Terraform  servicenow  Jenkins  Jira

 GitHub  urban{code}  GitLab





# Recent Updates

Apr '23	May '23	June '23
<p><b>Continuous Data (Virtualization)</b></p> <ul style="list-style-type: none"><li>• Azure Key Vault Integration</li></ul> <p><b>Continuous Compliance (Masking)</b></p> <ul style="list-style-type: none"><li>• Hyperscale Compliance Support for MongoDB and improved performance</li><li>• More Automated Sensitive Data Discovery Classifiers</li><li>• Classifiers User Interface</li><li>• Enhanced DocumentType support including JSON and XML</li><li>• Password Vault support for Hashicorp Vault</li><li>• CData License Upload</li><li>• ESXi Version End Of Life</li></ul> <p><b>Data Control Tower (DCT) 6</b></p> <ul style="list-style-type: none"><li>• Developer Experience User Interface</li><li>• DCT Bookmark UI</li><li>• Compliance Job Orchestration User Interface</li><li>• ServiceNow</li></ul>	<p><b>Continuous Data (Virtualization)</b></p> <ul style="list-style-type: none"><li>• Oracle Staging Push with Read-Only Databases</li><li>• Subsetting via Oracle Staging Push</li></ul> <p><b>Continuous Compliance (Masking)</b></p> <ul style="list-style-type: none"><li>• IBAN Discovery and Masking</li><li>• New US Driver's License Classifier</li><li>• Oracle Source Sizing</li><li>• New Features for the Postgres Connector</li><li>• User-controlled Automated Sensitive Data Discovery (ASDD) Set Upgrade</li></ul> <p><b>Data Control Tower (DCT) 7</b></p> <ul style="list-style-type: none"><li>• Provision VDB User Interface</li><li>• Refresh VDB User Interface</li><li>• VDB Template Import</li><li>• Infrastructure Connection Management</li><li>• ServiceNow Integration</li><li>• Terraform Integration</li></ul>	<p><b>Continuous Data (Virtualization)</b></p> <ul style="list-style-type: none"><li>• Support User Audit</li><li>• Certification for SMTP TLS authentication</li><li>• Refresh/Rewind of Oracle VDBs and VPDBs that have been exported to Oracle ASM Databases</li><li>• IBM Db2 Staging Push with the Database Partitioning feature</li><li>• MySQL/Linux - restrict the provision and rollback of a VDB to a database version older than the dSource.</li></ul> <p><b>Continuous Compliance (Masking)</b></p> <ul style="list-style-type: none"><li>• Sensitive Data Discovery for Extended Drivers</li><li>• Password Vault Support for Oracle</li></ul> <p><b>Data Control Tower (DCT) 8</b></p> <ul style="list-style-type: none"><li>• Operations Dashboard</li><li>• Provisioning Wizard Enhancements</li><li>• Advanced Search Tags Support</li></ul>

# Updated Connectors

Connector	Version
MongoDB	v1.3.0
IBM DB2	v4.6.0
MySQL on Linux	v4.1.0

- **MongoDB:** Pass additional parameters to mongodump and mongorestore. This adds parallel processing and flexibility to improve data extraction and ingestion speeds
- **IBM DB2:** Use Staging Push with the Database Partitioning feature (DPF) and custom mount points.
- **MySQL/Linux:** Restrict the provision and rollback of a VDB to a database version older than the dSource.